



Part of the **thirstywork** family

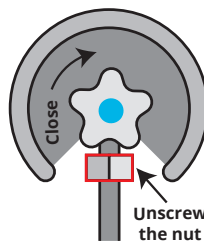
## How to replace your CO<sub>2</sub> cylinder

If your drinks are not sparkling as usual check the contents regulator located above your sparkling cylinder.



If the dial is in the red and nearing zero then your gas cylinder needs to be replaced.

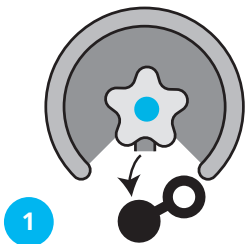
**Removing the empty cylinder** - spanner required.



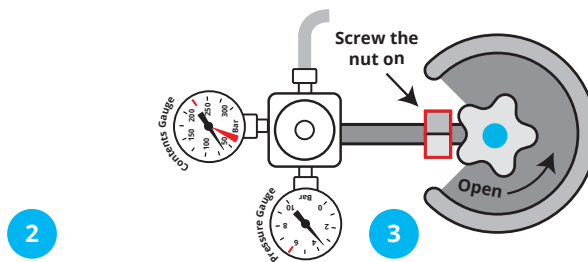
Turn the gas bottle off using the valve on top of the cylinder. Turn in the 'close' direction.

With an adjustable spanner loosen the nut and unscrew the gas regulator.

### Attaching the new cylinder



1 Remove the dust cap from the new CO<sub>2</sub> cylinder.



2 Using the adjustable spanner screw and tighten the nut onto the thread of your new CO<sub>2</sub> cylinder.

3 Turn the valve on the top of the CO<sub>2</sub> cylinder to 'open'. Watch the contents gauge needle rise to register that you have a gas supply again.



4 There is no need for any pressure adjustment as this is already set.

### You are now ready to dispense sparkling water



At first your water may appear flat, so you may need to keep dispensing water until it begins to sparkle. Leave the system to chill for 20 minutes to achieve optimal temperature and the fizz back in your drink.

### Ordering CO<sub>2</sub> cylinders

Please ensure that you stock spare gas cylinders. We recommend sizes SB or E as these can fit under your worktop, or B if storage size is not an issue. 1kg of gas provides approximately 100 litres of sparkling water.

Find out more



Call **01392 877 172** Email **hello@thirstywork.com**  
**www.thirstywork.com/pura-products**

PuraServe is part of the Thirsty Work family of companies.

