



## Clover D16

Mains Fed • Floor Standing • Chilled • Ambient • Filtered



**OPTIONAL  
ZERO HAND  
CONTACT  
TAPS**

*trial it, love it, keep it!*

Request your no obligation 10 day trial

Call **01392 877172** Email **hello@thirstywork.com**

**[www.thirstywork.com/free-trial](http://www.thirstywork.com/free-trial)**



# Clover D16

Mains fed water cooler



## COLOUR OPTIONS



Black

## WATER OPTIONS



Chilled



Filtered



Ambient



Hot

## INSTALLATION OPTIONS



Free-standing Unit

## KEY FEATURES

- Floor standing model
- Chilled and ambient water dispense option as standard, or choose our chilled and hot water model
- Large drip tray with the option of plumbing into mains waste
- Cooled temperature 2 - 8°C
- Hot temperature 82 - 92°C
- High glossy black finish as standard
- Superior resistance to sunlight
- Cold water output: 5 litres an hour
- Hot water output: 7 litres an hour
- Child-safe hot water faucet
- Optional zero hand contact taps (shown)
- With **pura** filtration
- Optional **puraguard** Antibacterial and antiviral protection

Our Clover water dispenser is available in two output options to suit your drinking preferences. Choose our cold and ambient model for chilled, filtered water on demand, or our cold and hot water dispenser - the perfect way to save time and energy, and reduce plastic waste.

Puraguard is a ground-breaking protective antimicrobial coating that can be applied to your dispensers taps on request, providing 24hr protection against the growth of microbes (bacteria, moulds, fungi and viruses). Ask us for more information, and to request this coating.

## DIMENSIONS

Height:	1,140mm
Width:	290mm
Depth:	365mm

## FULL SPECIFICATION Clover D16 mains fed water cooler

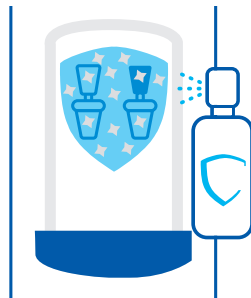
Power rating	Single phase reciprocating	
	Cold	100V - 127V (±10%) 50 / 60Hz
	Hot	220V - 240V (±10%) 50 / 60Hz
Power consumption	Cold	105W
	Hot	440W
Cold	Compressor	Internally spring mounted LG
	Refrigerant	R134a
	Temperature range	2 - 8°C (35.6 - 46.4°F)
	Capacity	5 l/hr
Hot	Heater type	Sheathed heater
	Temperature control	Auto and manual bi-metal
	Temperature range	82 - 92°C (179.6 - 197.6°F)
	Capacity	7 l/hr
Refrigerant charge	46g (1.62 oz)	
Product weight	21kg (46.3 lb)	
Product boxed weight	23kg (50.7 lb)	
Product dimensions	290mm (W) X 365mm (D) X 1,140mm (H)	
	11.4" (W) X 14.3" (D) X 44.8" (H)	
Product boxed dimensions	305mm (W) X 380mm (D) X 1,165mm (H)	
	12.1" (W) X 14.9" (D) X 45.8" (H)	
Loading quantity	20' container	215 units
	40' container	455 units

## AVAILABLE ACCESSORIES



### Paper Cups

- 7oz recyclable paper cups
- 7oz biodegradable and compostable paper cups
- 4oz paper cones



### Puraguard

- Antibacterial and Antiviral Protection Coating

*trial it, love it, keep it!*

Request your no obligation 10 day trial

Call **01392 877172** Email **hello@thirstywork.com**

**www.thirstywork.com/free-trial**