



**thirstywork**  
*we're all about water!*

LK-EZH2O

Mains Fed • Wall Mounted • Chilled • Filtered



*trial it, love it, keep it!*

Request your no obligation 10 day trial

Call **01392 877172** Email **hello@thirstywork.com**

**[www.thirstywork.com/free-trial](http://www.thirstywork.com/free-trial)**

# LK-EZH20

Hands-free activation bottle filling station  
LZO8WSS2KN



## COLOUR OPTIONS



Stainless Steel

## WATER OPTIONS



Chilled



Filtered

## INSTALLATION OPTIONS



Wall mounted



## KEY FEATURES

- Sensor activated bottle filler and drinking fountain combination
- Cooled temperature 3-10°C
- Surface wall-mounted for indoor use
- Suitable for busy public environments
- Safe and reliable
- 42 litres per hour output
- Laminar flow provides minimal splash
- Full filter change and servicing package included
- Built-in drainage eliminates standing water
- With **pura** filtration
- Optional **puraguard** Antibacterial and antiviral protection

The LK-EZH20 provides hands-free access to bottle refill facilities, and unusually, the drinking fountain too, making all elements of this unit incredibly easy to use.

This model has been built for low energy consumption and designed with a series of green features. The unit itself has been constructed using 75% recycled materials and the integrated Green Ticker informs users just how many 20oz plastic water bottles have been saved from waste through the use of the refill station.

Puraguard is a ground-breaking protective antimicrobial coating that can be applied to your dispensers taps on request, providing 24hr protection against the growth of microbes (bacteria, moulds, fungi and viruses). Ask us for more information, and to request this coating.

## DIMENSIONS

Height:	975mm
Width:	454mm
Depth:	473mm

## INSTALLATION INFORMATION LK-EZH20 surface-mounted, bottle filler

### MOUNTING FRAME MFWS100 WITH CHILLER SHELF

IMPORTANT! INSTALLER PLEASE NOTE:

This water cooler has been designed and built to provide water to the user which has not been altered by materials in the cooler waterways. The grounding of electrical equipment such as telephone, computer, etc. to water lines is a common procedure. The grounding may be in the building but may also occur away from the building. This grounding can cause electrical feedback in to a water cooler creating an electrolysis which creates a metallic taste or causes an increase in the metal content of the water. This condition is avoidable by installing the cooler using the proper materials as shown below.

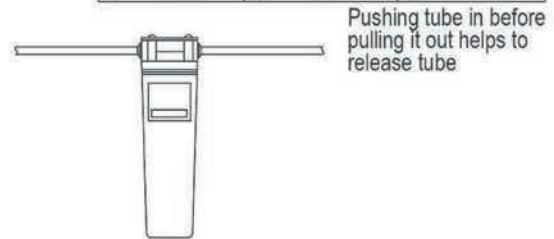
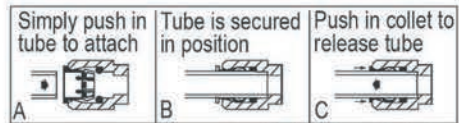
NOTICE

This water cooler must be connected to the water supply using a dielectric coupling. The cooler is furnished with a non-metallic strainer which meets this requirement. The drain trap which is provided by the installer should also be plastic to completely isolate the cooler from the building plumbing system.

Bottle filler unit on bracket attached to wall by 6 holes (as shown). Water and electrical will connect through pre-punched holes in basin.

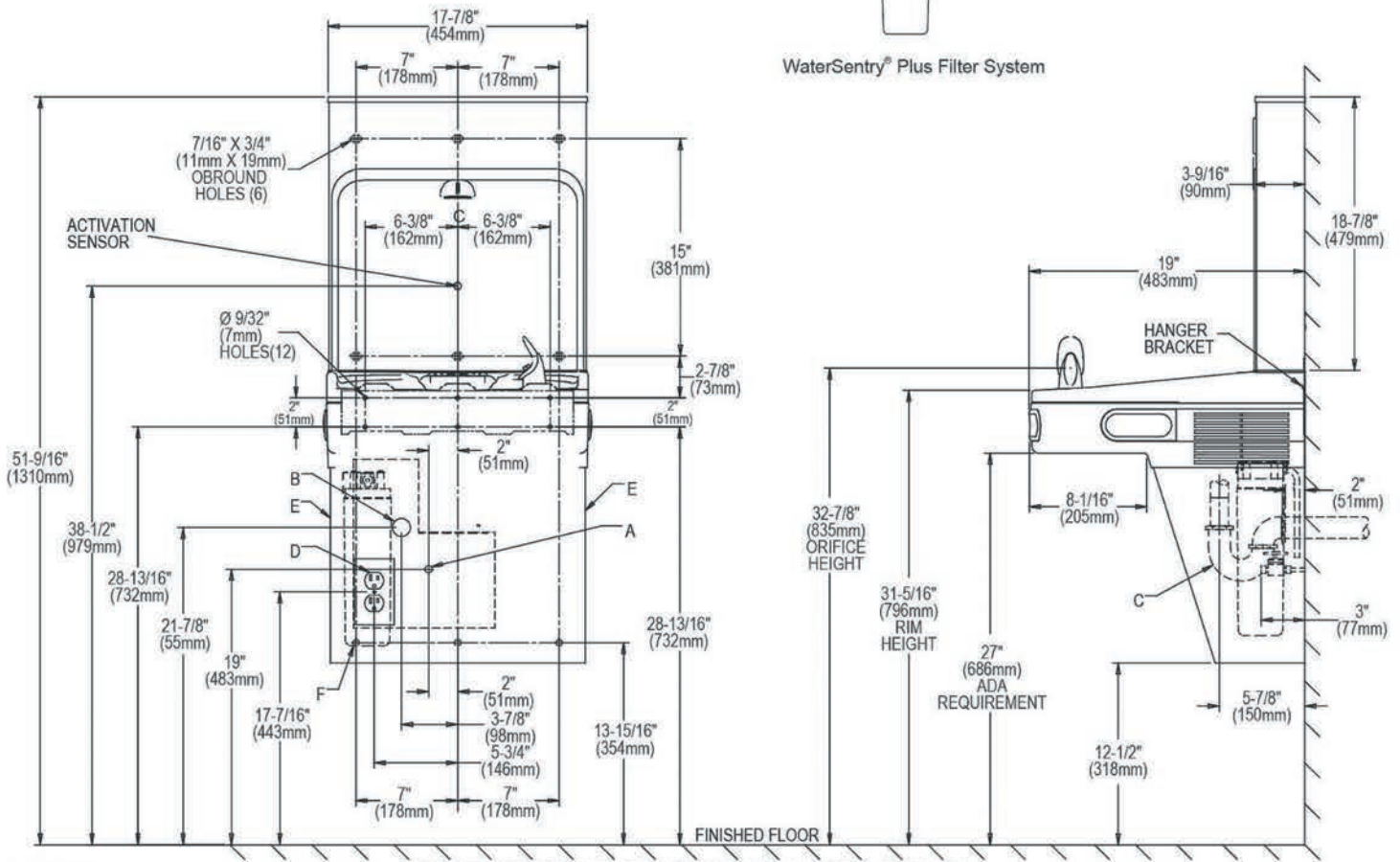
These products are designed to operate on 20psi to 105psi supply line pressure.

#### OPERATION OF QUICK CONNECT FITTINGS



Pushing tube in before pulling it out helps to release tube

WaterSentry® Plus Filter System



#### LEGEND:

- A = Recommended Water Supply location. Shut-off Valve (not furnished) to accept 3/8" O.D. unplated copper tube. Up to 3" (76mm) maximum out from wall.
  - B = Recommended Waste Outlet location. To accommodate 1-1/4" nominal drain.
  - C = 1-1/4" Trap (not furnished).
  - D = Electrical Supply (3) Wire Recessed Box Duplex Outlet.
  - E = Insure proper ventilation by maintaining 6" (152mm) minimum clearance from cabinet
  - F = 7/16" (11mm) Bolt Holes for fastening to wall.
- Note : New Installations Must Use Ground Fault Circuit Interrupter (GFCI). It is highly recommended that the circuit be dedicated and the load protection be sized for 20 amps.

Information correct at time of printing, please check manufacturer website for latest installation information.

## FULL SPECIFICATION Wall-mounted, LK-EZH2O Bottle Filler and Drinking Fountain

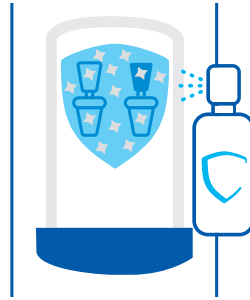
Rated input	370W
Throughput litres per hour	42L/h
Dimensions	454mm (W) x 473mm (D) x 975mm (H)
	Dispense height: 310mm
Refrigeration	R-290

### AVAILABLE ACCESSORIES



#### Paper Cups

- 7oz recyclable paper cups
- 7oz biodegradable and compostable paper cups
- 4oz paper cones



#### Puraguard

- Antibacterial and Antiviral Protection Coating



#### UV Water Steriliser

Utilising the most advanced UV technology, the unit has been designed to eliminate 99.99% of all waterborne microorganisms, including mould, bacteria and virus'.

*trial it, love it, keep it!*

Request your no obligation 10 day trial

Call **01392 877172** Email **hello@thirstywork.com**

**[www.thirstywork.com/free-trial](http://www.thirstywork.com/free-trial)**