



AquaPointe-R Bottle Filler

Chilled • Filtered



Touch-free,
sensor
activated
dispense

Call **01392 877 172** Email **hello@thirstywork.com**
www.thirstywork.com

AquaPointe-R

Wall Mounted Bottle Filler

Touchless, refrigerated bottle filler
PN8EBFY



COLOUR OPTIONS



Brushed
Stainless
Steel

WATER OPTIONS



Chilled



Filtered

Not all options are included as standard, please choose at point of order

INSTALLATION OPTIONS



Wall Mounted



hydrateconsciously!
We're committed to reducing plastic waste

KEY FEATURES

- Chilled water
- Compact sports bottle filler
- Electronic touch-free activation with shut-off timer
- Enhanced alcove to fit large sports bottles
- Basin is designed to eliminate splashing and standing water.
- Surface wall-mounted
- Heavy duty steel frame
- The bottle counter tracks how many times the unit has been used and promotes refilling of sports bottles
- Energy-efficient LEDs illuminate alcove and aids bottle filling
- Built-in drainage - no drip tray to empty
- Simple to replace existing water fountains
- With **pura** filtration

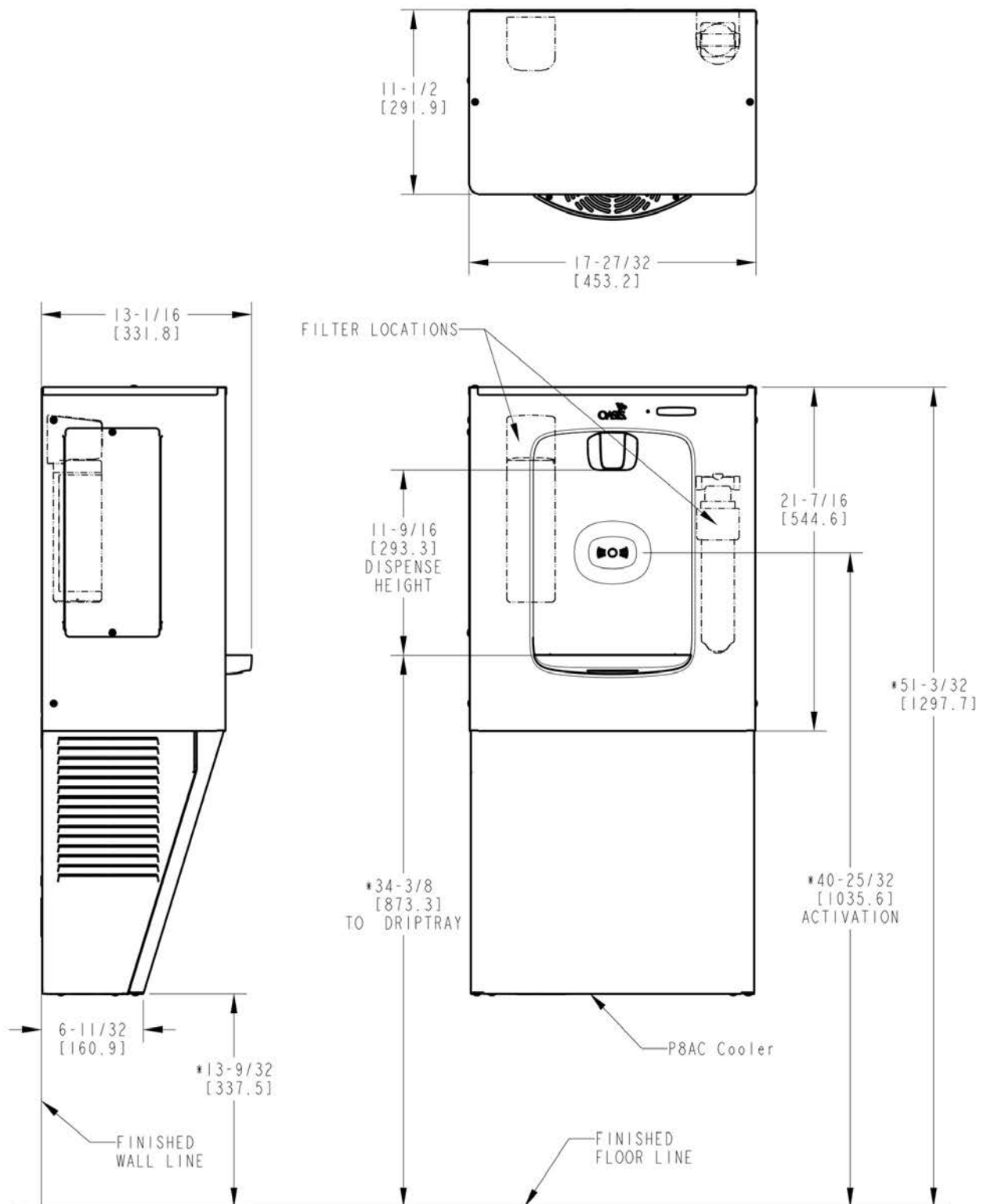
The AquaPointe-R bottle filler is a robust and simple to operate refrigerated bottle filler with electronic, touch-free activation (infrared sensor). The bottle filler has a shut-off timer, and an integrated bottle counter that displays the number of refills.

It is ideal for busy venues, such as public buildings, gyms and sports complexes, hospitals, schools, airports and offices.

DIMENSIONS

Height (refrigerated):	960mm
Width (refrigerated)::	453mm
Depth (refrigerated)::	331mm
Dispense height:	330mm

TOUCHLESS REFRIGERATED INSTALLATION



NOTES:

1. *DIMENSIONS ARE REFERENCE ONLY.
2. ALL DIMENSIONS ARE IN INCHES. DIMENSIONS IN BRACKETS [] ARE IN MILLIMETERS.

FULL SPECIFICATION AquapointeR refrigerated surface-mounted bottle filler.

Max power consumption	Refrigerated, contactless: 7W	Power supply: 220-240V, 50/60 Hz
Throughput litres per hour	60L/h	
Cooling performance	Chilled below 10°C	32°C Ambient
Dimensions	453mm (W) x 331mm (D) x 960mm (H)	
Weight	25.4 kg	

AVAILABLE ACCESSORIES



Recyclable Paper Cups

- 7oz recyclable paper cups
- 4oz paper cones



Thirsty Work Water Bottles

Thirsty Work 500ml reusable stainless steel water bottles. 67mm x 270mm high.



Bespoke Printed Water Bottles

Add your own company logo to our 500ml reusable stainless steel water bottles. Available in a range of colours.



Request your no obligation 10 day trial
Call **01392 877 172** Email **hello@thirstywork.com**
www.thirstywork.com/free-trial