



thirstywork

we're all about water!

LK-Surface

Mains Fed • Wall Mounted • Ambient



trial it, love it, keep it!

Request your no obligation 10 day trial

Call **01392 877172** Email **hello@thirstywork.com**

www.thirstywork.com/free-trial

LK-Surface

Ambient mains fed, wall mounted, bottle filler
HTHBSM-WF



KEY FEATURES

- Sensor activated bottle filler
- Ambient water (non-refrigerated)
- Optional remote chiller for refrigeration
- Surface wall-mounted for indoor use
- Suitable for busy public environments
- Laminar flow provides minimal splash
- Silver Ion Antimicrobial protection on key plastic components to inhibit the growth of mould and mildew
- Full filter change and servicing package included
- Built-in drainage eliminates standing water
- With **pura** filtration
- Optional **puraguard** Antibacterial and antiviral protection

The LK-Surface is the ideal drinking solution for visitors to high footfall indoor public areas, such as schools, health clubs, airports and hospitals. With a depth of 20cm, this ambient water bottle filling station will comfortably fit into almost any location.

Designed with user-friendliness in mind, the hands-free filling mechanism and laminar flow reduce the chance of spillages, while queues are cut through ease and speed of use. Water dispense flow is automatically ceased after 20 seconds.

As a non-refrigerated unit, it consumes very little electricity (it is possible to easily connect the unit to an optional remote chiller).

The integrated Green Ticker informs users just how many 20oz plastic water bottles have been saved from waste through the use of the refill station.

COLOUR OPTIONS



Stainless Steel

WATER OPTIONS



Ambient



Chilled option



Filtered

INSTALLATION OPTIONS



Wall mounted

DIMENSIONS

Height:	647mm
Width:	455mm
Depth:	208mm

INSTALLATION INFORMATION LK-Surface wall-mounted, bottle filler

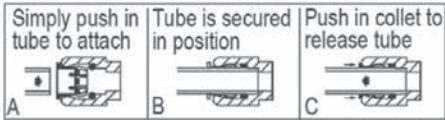
IMPORTANT! INSTALLER PLEASE NOTE:

Ensure wall is structurally sound to bear the loads imparted by the surface mount bottle filler.

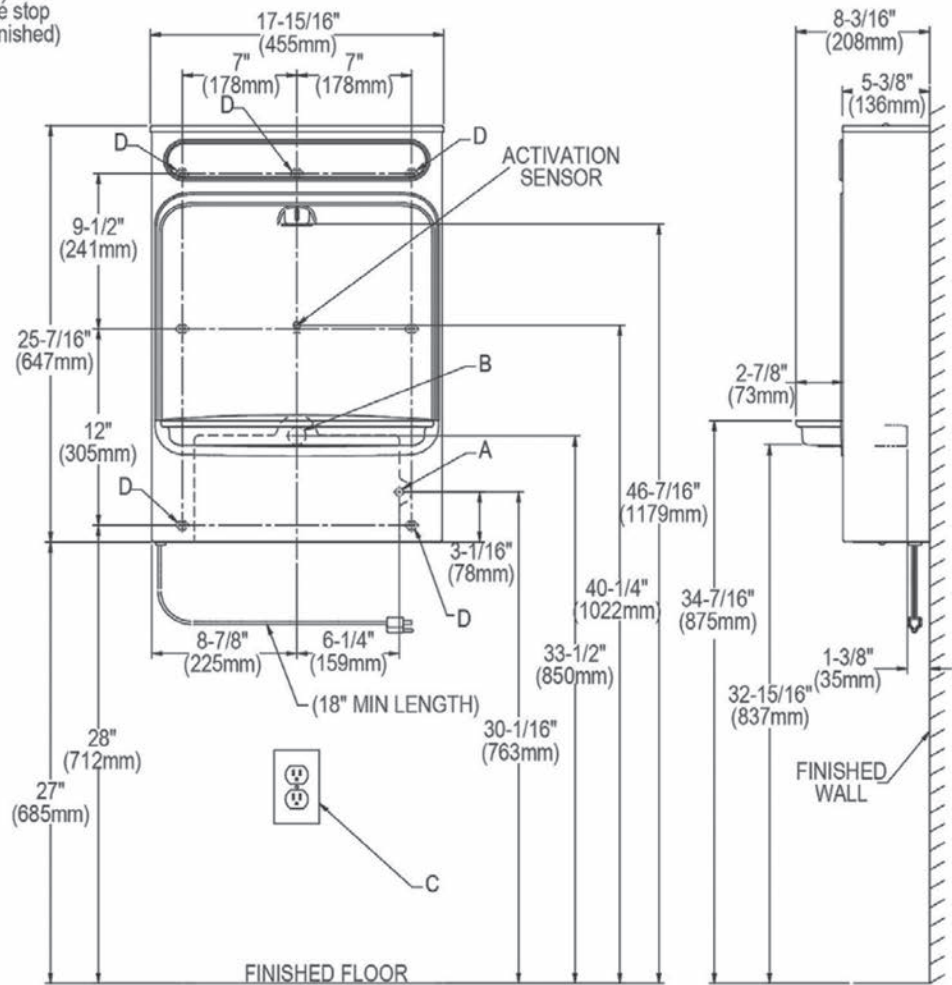
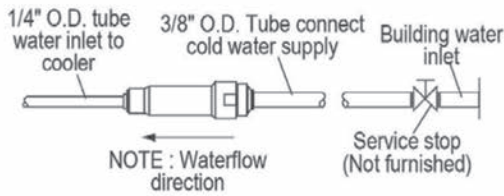
ELECTRICAL

Equipped with electrical cord and three-prong moulded rubber plug for use with 15-amp minimum receptacle. Rated at 230V/50Hz, single phase.

OPERATION OF QUICK CONNECT FITTINGS



Pushing tube in before pulling it out helps to release tube



LEGEND :

A = Recommended water supply location; 1/2" I.P.S. maximum pipe size. Service stop valve not furnished.

B = Recommended location for waste outlet 1-1/4" O.D. maximum pipe size.

C = Electrical outlet, three (3) conductor grounded. Locate within safe reach of power cord.

D = 7/16" X 3/4" or round mounting holes for fastening backplate to wall.

NOTE : New Installations Must Use Ground Fault Circuit Interrupter (GFCI). It is highly recommended that the circuit be dedicated and the load protection be sized for 20 amps.

Information correct at time of printing, please check manufacturer website for latest installation information.

FULL SPECIFICATION LK-Surface mains fed, wall mounted, ambient bottle filler

Power	230V/50Hz	
Throughput litres per hour	80 L/h	With chiller
Dimensions	208mm (W) x 455mm (D) x 647mm (H)	
	Dispense height: 310mm	

AVAILABLE ACCESSORIES



Paper Cups

- 7oz recyclable paper cups
- 7oz biodegradable and compostable paper cups
- 4oz paper cones



Remote Chiller

- Non-Filtered
- Can be placed anywhere within 10 metres of the install location
- Requires mains water and power connection
- 80 litre per hour



UV Water Steriliser

Utilising the most advanced UV technology, the unit has been designed to eliminate 99.99% of all waterborne microorganisms, including mould, bacteria and virus'



Puraguard

Puraguard is a ground-breaking protective antimicrobial coating that can be applied to your dispensers taps on request, providing 24hr protection against the growth of microbes (bacteria, moulds, fungi and virus').

trial it, love it, keep it!

Request your no obligation 10 day trial

Call **01392 877172** Email **hello@thirstywork.com**

www.thirstywork.com/free-trial