



thirstywork

we're all about water!

LK-OutdoorUp

Mains Fed • Wall Mounted • Ambient



trial it, love it, keep it!

Request your no obligation 10 day trial

Call **01392 877172** Email **hello@thirstywork.com**

www.thirstywork.com/free-trial



LK-OutdoorUp

Mains fed, wall mounted, outdoor bottle filler
LK4405BF



COLOUR OPTIONS (may vary on final product)



Evergreen



Blue



Purple



Red



Terracotta



Orange



Yellow



Black



Brown



Gray



Beige



White

WATER OPTIONS



Ambient

INSTALLATION OPTIONS



Wall mounted

KEY FEATURES

- High volume water bottle filler
- Choose from 12 colour options
- Suitable for outdoor public environments
- Heavy duty vandal-resistant
- One gallon per minute output of ambient water
- Non-filtered, non-refrigerated model
- Laminar flow provides minimal splash
- Simple push-button activation

The LK-OutdoorUp tubular bottle filling station is ideal for outdoor installation, with a strong steel frame and a simple push-button activation unit to prevent damage from vandals. A water flow rate of one gallon per minute means that it'll fill your standard 500ml drinks bottle in an impressive seven seconds.

A textured powder-coat finish and rounded corners make this one of the best looking bottle filling stations on the market, and an E-Coat immersion also means the unit is almost completely resistant to corrosion both inside and out.

This bottle filler has been built with heavy duty vandal-resistant features. The access panel is cast from heavy duty steel, with anti-vandal screws. This provides easy access should you need to alter or replace any plumbing connections, yet impossible access for troublemakers.

DIMENSIONS

Height:	462mm
Width:	254mm
Depth:	486mm

INSTALLATION INFORMATION LK-Outdoor-Up wall mounted, outdoor bottle filler

MOUNTING INSTRUCTIONS AND PLUMBING CONNECTIONS

IMPORTANT! INSTALLER PLEASE NOTE:

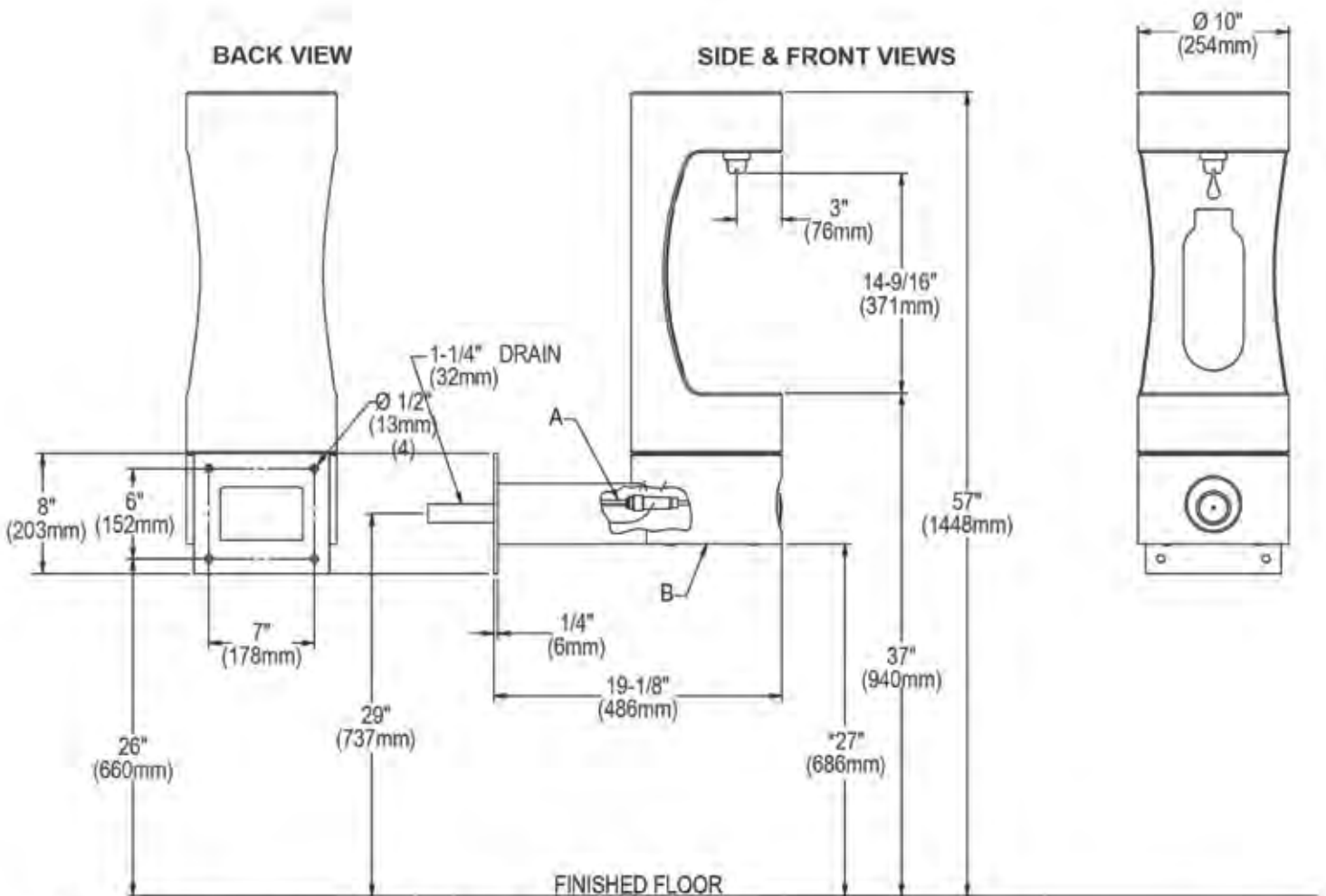
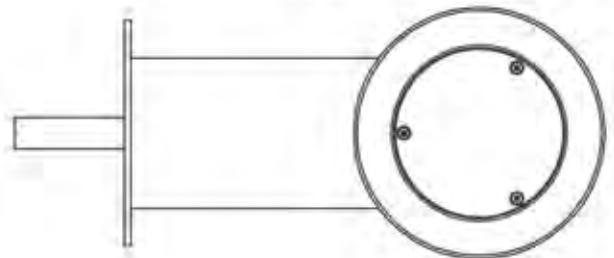
Refer to diagrams for plumbing rough-in. This bottle filler is to be mounted on a smooth flat finished wall surface with adequate support.

Note: Wall mounting structure must be capable of supporting a 300lb. load minimum on bottle filler. To secure unit, use 3/8" minimum fasteners (not provided). Water service line and waste line are to be assembled as required. Final check for leaks and correct functions of bottle filler should be made. (For details see the installation instructions). Installation requires trap to be installed in wall. A service supply stop must be installed at the bottle filler inlet line. Trap and service stop not included.

Caution - bottle filler must be securely bolted to wall.

NOTE: For wall support required locations see installation instructions provided with bottle filler.

OPERATING PRESSURES:
Supply water 20 – 105 psi maximum



A = 3/8" O.D. Unplated copper tube connect. Shut off valve by others.
B = Access panel(8" x 10")

* ADA Requirement

Information correct at time of printing, please check manufacturer website for latest installation information.

FULL SPECIFICATION Wall-mounted, LK-OutdoorUp Water Bottle Filler

Rated input	N/A	
Throughput litres per hour	Approximately 272 L/h	Depending on mains water pressure
Dimensions	254mm (W) x 486mm (D) x 462mm (H)	
	Dispense height: 310mm	

trial it, love it, keep it!

Request your no obligation 10 day trial

Call **01392 877172** Email **hello@thirstywork.com**

www.thirstywork.com/free-trial