



RiverUp Fountain

Mains Fed • Wall Mounted • Chilled • Filtered



trial it, love it, keep it!

Request your no obligation 10 day trial

Call **01392 877172** Email **hello@thirstywork.com**

www.thirstywork.com/free-trial



RiverUp Fountain

Mains fed, wall mounted, cold water fountain



KEY FEATURES

- High volume water fountain
- Sleek style
- Suitable for public environments
- Safe and reliable
- Ice-bank cooling system
- 30 or 55 litres per hour output
- Full filter change and servicing package included
- With **pura** filtration
- Optional **puraguard** Antibacterial and antiviral protection

The RiverUp Fountain is connected to the water mains, ensuring constant quality, and the guarantee of a reliable system for drinking water in public areas.

It offers all the advantages of the floor standing model but in a smaller space. The range of taps makes it possible to drink directly from the jet and/or using a cup. The sink also features a drainage system.

Puraguard is a ground-breaking protective antimicrobial coating that can be applied to your dispensers taps on request, providing 24hr protection against the growth of microbes (bacteria, moulds, fungi and viruses). Ask us for more information, and to request this coating.

COLOUR OPTIONS



Stainless Steel



Matt

WATER OPTIONS



Chilled



Filtered

INSTALLATION OPTIONS



Wall mounted

DIMENSIONS

Height:	505mm
Width:	432mm
Depth:	360mm

FULL SPECIFICATION Wall-mounted, RiverUp Water Fountain

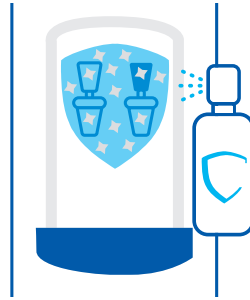
Rated input	180W
Throughput litres per hour	30L/h or 55L/h
Dimensions	432mm (W) x 360mm (D) x 505mm (H)
	Dispense height: approximately 200mm

AVAILABLE ACCESSORIES



Paper Cups

- 7oz recyclable paper cups
- 7oz biodegradable and compostable paper cups
- 4oz biodegradable paper cones



Puraguard

- Antibacterial and Antiviral Protection Coating

trial it, love it, keep it!

Request your no obligation 10 day trial

Call **01392 877172** Email **hello@thirstywork.com**

www.thirstywork.com/free-trial