



AquaPointe Bottle Filler

Ambient • Filtered



Optional
touch-free,
sensor
activated
dispense

Ideal for
indoor and
outdoor
use

Call **01392 877 172** Email **hello@thirstywork.com**
www.thirstywork.com

Aquapointe Wall Mounted Bottle Filler

Our most compact non-refrigerated bottle filler
PWSMSBF / PWSMEBFY



Manual
non-refrigerated model



Touch-free
non-refrigerated model

KEY FEATURES

- Ambient water (non-refrigerated model)
- Compact sports bottle filler
- Manual push button activation or optional electronic touch-free activation with shut-off timer and refill counter
- Enhanced alcove to fit large sports bottles
- Basin is designed to eliminate splashing and standing water.
- Surface wall-mounted or counter top
- Heavy duty steel frame
- No electricity required to operate the manual non-refrigerated model
- Built-in drainage - no drip tray to empty
- Simple to replace existing fountains
- With **pura** filtration

COLOUR OPTIONS



Brushed
Stainless
Steel

WATER OPTIONS



Ambient



Filtered

Not all options are included as standard, please choose at point of order

INSTALLATION OPTIONS



Wall Mounted



Counter-top

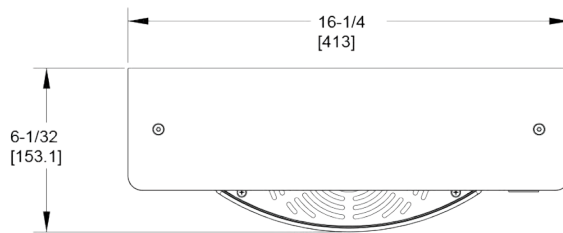
The AquaPointe bottle filler is our most compact bottle filler, available as a non-refrigerated, or refrigerated model. It is ideal for busy venues, such as public buildings, gyms and sports complexes, hospitals, schools, and offices. The manual non-refrigerated model requires no power to operate.

The contactless model has a shut-off timer, and an integrated bottle counter that conveniently tracks and displays the number of refills.

DIMENSIONS

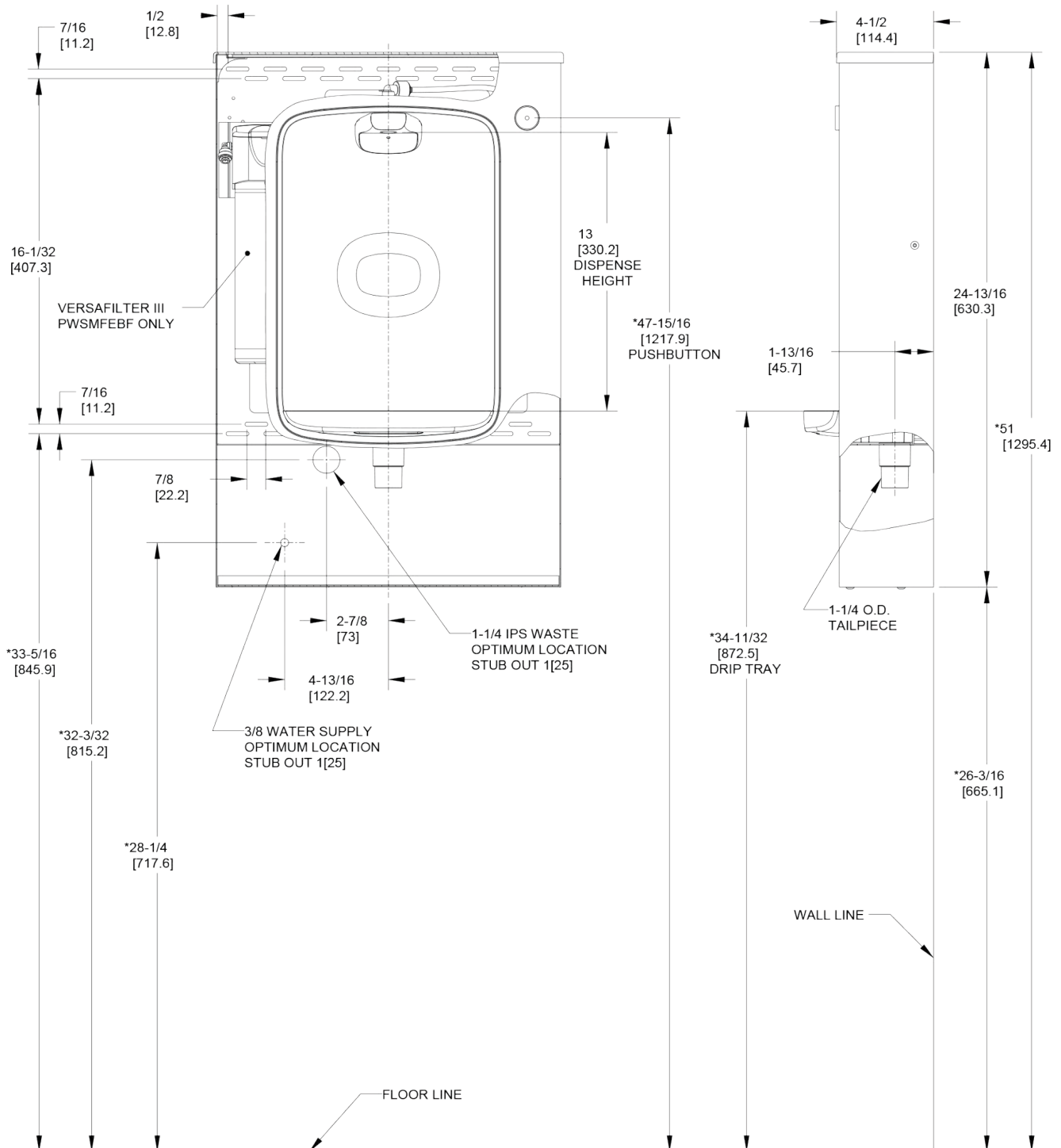
Height (non-refrigerated):	630mm
Width (non-refrigerated)::	413mm
Depth (non-refrigerated)::	144mm
Dispense height:	330mm

MANUAL NON-REFRIGERATED INSTALLATION

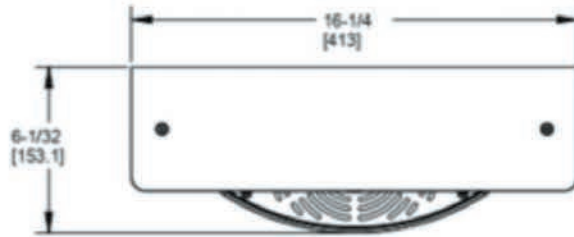


NOTES:

- * 1. RECOMMENDED ADULT BARRIER FREE HEIGHT INSTALLATION SHOWN. ADJUST VERTICAL DIMENSIONS AS REQUIRED TO COMPLY WITH FEDERAL, STATE AND LOCAL CODES.
2. 3/8 O.D. WATER INLET WITH STRAINER PROVIDED.
3. STOP VALVE, TRAP, PIPE CONNECTOR TO WASTE LINE AND 3/8 COMPRESSION FITTING NOT PROVIDED.
4. ALL DIMENSIONS ARE IN INCHES. DIMENSIONS IN BRACKETS [] ARE IN MILLIMETERS.

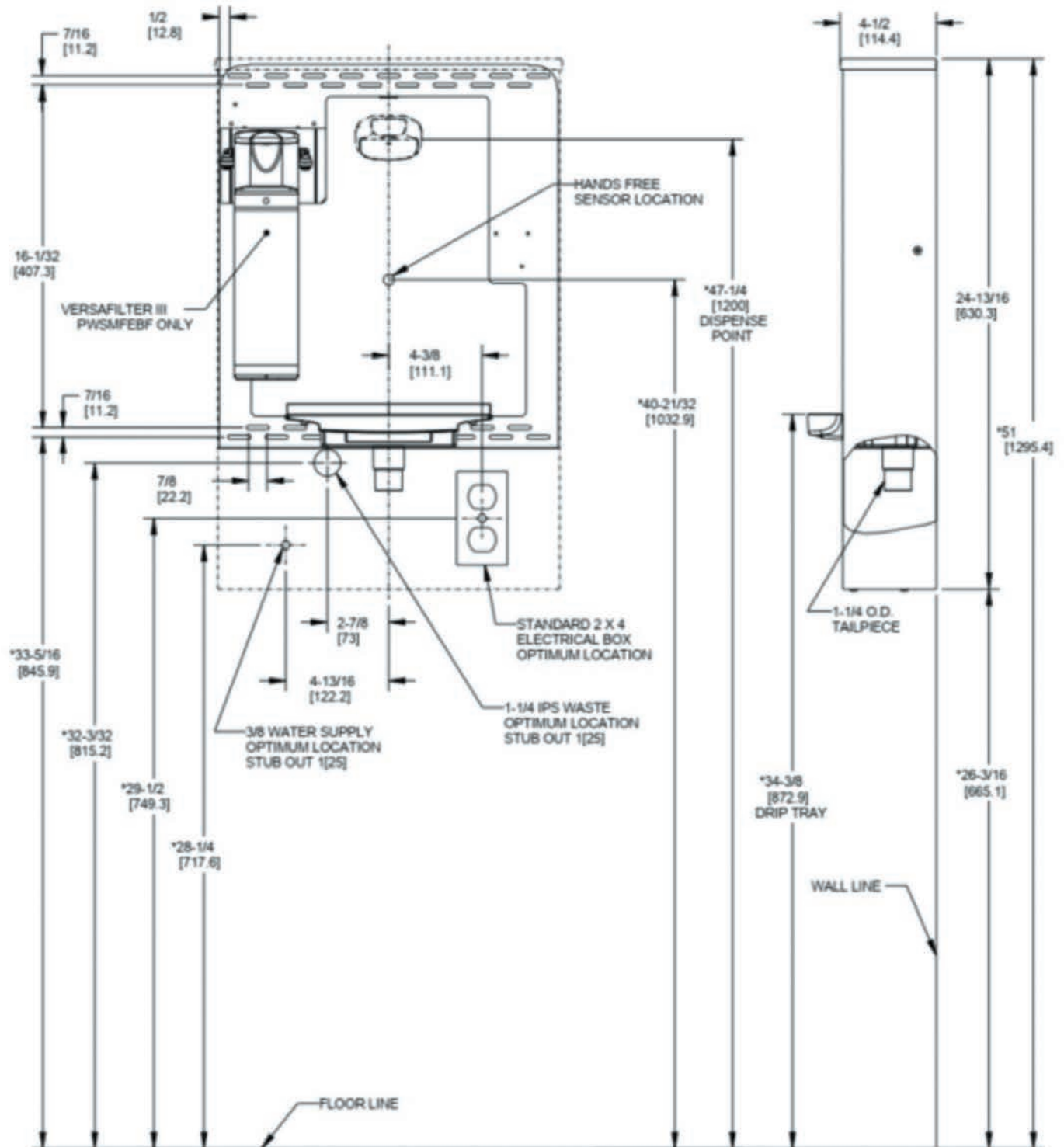


TOUCHLESS NON-REFRIGERATED INSTALLATION



NOTES:

- * 1. RECOMMENDED ADULT HEIGHT INSTALLATION SHOWN. ADJUST VERTICAL DIMENSIONS AS REQUIRED TO COMPLY WITH FEDERAL, STATE AND LOCAL CODES.
- 2. 3/8 O.D. WATER INLET WITH STRAINER PROVIDED.
- 3. STOP VALVE, TRAP, PIPE CONNECTOR TO WASTE LINE AND 3/8 COMPRESSION FITTING NOT PROVIDED.
- 4. ALL DIMENSIONS ARE IN INCHES. DIMENSIONS IN BRACKETS [] ARE IN MILLIMETERS.



FULL SPECIFICATION Aquapointe manual, non-refrigerated surface-mounted bottle filler.

Max power consumption	Manual: No power required
Throughput litres per hour	As mains water supply
Dimensions	413mm (W) x 144mm (D) x 630mm (H)
Weight	5kg

FULL SPECIFICATION Aquapointe contactless, non-refrigerated surface-mounted bottle filler.

Max power consumption	Contactless: 7W	Power supply: 220-240V, 50/60 Hz
Throughput litres per hour	As mains water supply	
Dimensions	413mm (W) x 144mm (D) x 630mm (H)	
Weight	5kg	

AVAILABLE ACCESSORIES



Recyclable Paper Cups

- 7oz recyclable paper cups
- 4oz paper cones



Thirsty Work Water Bottles

Thirsty Work 500ml reusable stainless steel water bottles. 70mm x 219mm high.



Bespoke Printed Water Bottles

Add your own company logo to our 500ml reusable stainless steel water bottles. Available in a range of colours.



Request your no obligation 10 day trial

Call **01392 877 172** Email **hello@thirstywork.com**

www.thirstywork.com/free-trial