



OasisFS Bottle Filler

Chilled • Filtered



Touch-free,
sensor
activated
dispense

Request your no obligation 10 day trial
Call **01392 877 172** Email **hello@thirstywork.com**
www.thirstywork.com/free-trial



hydrateconsciously!
We're committed to reducing plastic waste

Free-standing Bottle Filler

The ideal solution for busy public spaces

PCP8EBFY



KEY FEATURES

- Refrigerated
- Sensor activated touch-free activation
- Large alcove to fit most sports bottles
- Floor-standing model
- Highly efficient cooling tank
- 30 second shut-off timer
- 60L/h output
- Cooled temperature 10°C
- Built-in drainage - no drip tray to empty
- Refrigeration is only on when in use or if water temperature increases during long periods of standby
- With **pura** filtration

COLOUR OPTIONS



Brushed
Stainless
Steel

WATER OPTIONS



Chilled



Filtered

Not all options are included as standard, please choose at point of order

The OasisFS Bottle Filler is ideal for busy venues, such as public buildings, gyms and sports complexes, hospitals, schools, and offices.

The bottle filler is activated via an electronic, touch-free infrared sensor and has a shut-off timer, and an integrated bottle counter that tracks and displays the number of refills.

INSTALLATION OPTIONS



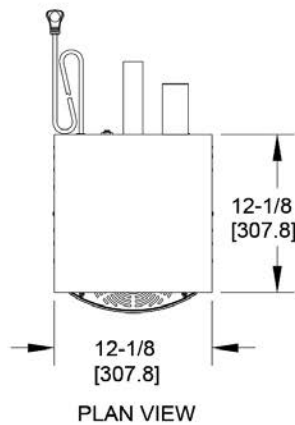
Floor-standing Unit

DIMENSIONS

Height:	1262mm
Width:	304mm
Depth:	339mm
Dispense height:	265mm

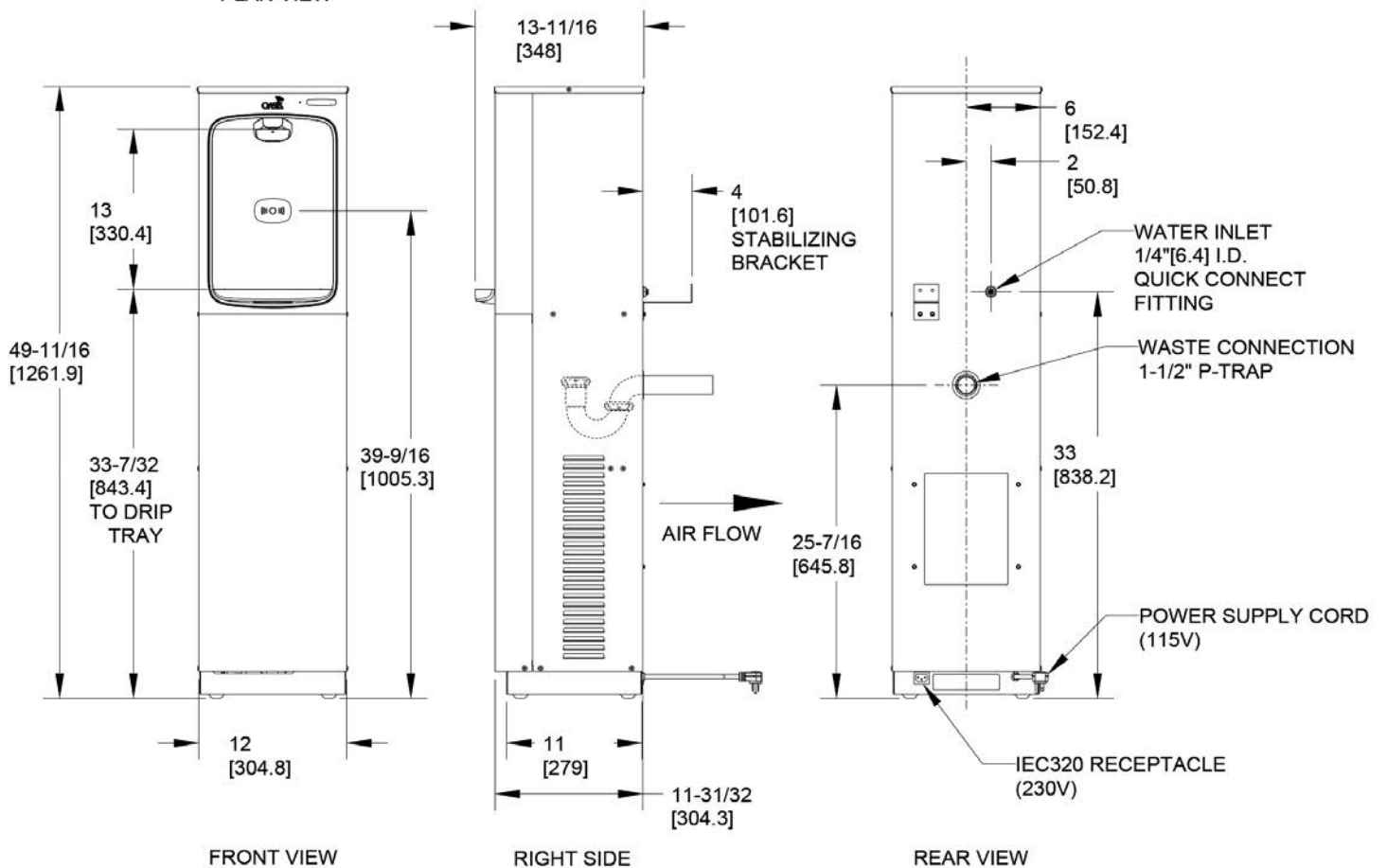
INSTALLATION

All dimensions are in millimetres.



ALL DIMENSION ARE IN INCHES.
DIMENSIONS IN BRACKETS [] ARE IN MILLIMETERS.

ALLOW 4"[102] FOR VENTILATION AT THE
REAR OF THE WATER COOLER AND THE
SIDES IF SET IN AN ALCOVE OR NEAR A CORNER.



FULL SPECIFICATION OasisFS floor-standing water bottle filler.

Max power consumption	Refrigerated: 500W
Throughput litres per hour	Refrigerated: 60L/h
Dimensions	304mm (W) x 339mm (D) x 1262mm (H)
Weight	Refrigerated: 33.6kg

INSTALLATION REQUIREMENTS

The OasisFS requires adequate floor space for installation. Please ensure that the following is available where the system is to be installed:

- ✓ **A potable mains water supply within 5 metres of unit installation location.**
- ✓ **A 240-volt electric socket within 1 metre of unit location.**
- ✓ **A suitable waste pipe for the removal of excess water**

All of the above can be confirmed in your site survey.

AVAILABLE ACCESSORIES

 **Plastic-free
Recycle me!**



Recyclable Paper Cups

- 7oz recyclable paper cups
- 4oz paper cones



Thirsty Work Water Bottles

Thirsty Work 500ml reusable stainless steel water bottles. 67mm x 270mm high.



Bespoke Printed Water Bottles

Add your own company logo to our 500ml reusable stainless steel water bottles. Available in a range of colours.



Call **01392 877 172** Email **hello@thirstywork.com**
www.thirstywork.com