



Elkay-EZH2O®

Surface Mounted Hands-free Bottle Filling Station

Mains Fed • Wall Mounted • Ambient • Filtered or Unfiltered



Optional
bespoke
branding

Hands-free
sensor
operated

trial it, love it, keep it!

Request your no obligation 10 day trial

Call **01392 877 172** Email **hello@thirstywork.com**

www.thirstywork.com/free-trial

LZWSSMJO

Elkay-EZH2O®



hydrateconsciously!
We're committed to reducing plastic waste

Ambient mains fed, wall mounted, bottle filler
Filtered: LZWSSMJO / Unfiltered: EZWSSMJO



COLOUR OPTIONS



Stainless Steel

WATER OPTIONS



Ambient



Chilled option



Filtered

INSTALLATION OPTIONS



Wall mounted

KEY FEATURES

- Sensor activated bottle filler
- Ambient water (non-refrigerated)
- Optional remote chiller for refrigeration
- Surface wall-mounted for indoor use
- Suitable for busy public environments
- Laminar flow provides minimal splash
- Silver Ion Antimicrobial protection on key plastic components to inhibit the growth of mould and mildew
- Full filter change and servicing package included
- Built-in drainage eliminates standing water
- With Elkay filtration

The Elkay EZH2O® Surface Mounted Hands-free Bottle Filling Station is the ideal drinking solution for visitors to high footfall indoor public areas, such as schools, health clubs, airports and hospitals. With a depth of 20cm, this ambient water bottle filling station will comfortably fit into almost any location.

Designed with user-friendliness in mind, the hands-free filling mechanism and laminar flow reduce the chance of spillages, while queues are cut through ease and speed of use. Water dispense flow is automatically ceased after 20 seconds.

As a non-refrigerated unit, it consumes very little electricity - ideal for locations looking to reduce electrical usage. (it is possible to easily connect the unit to an optional remote chiller).

The integrated Green Ticker informs users just how many 20oz plastic water bottles have been saved from waste through the use of the refill station.

DIMENSIONS

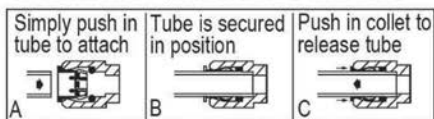
Height:	647mm
Width:	455mm
Depth:	208mm

INSTALLATION INFORMATION Elkey EZH2O® Surface Mounted Hands-free Filtered Bottle Filling Station

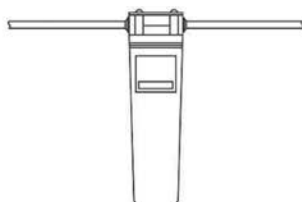
IMPORTANT! INSTALLER PLEASE NOTE:

Ensure wall is structurally sound to bear the loads imparted by the surface mount bottle filler.

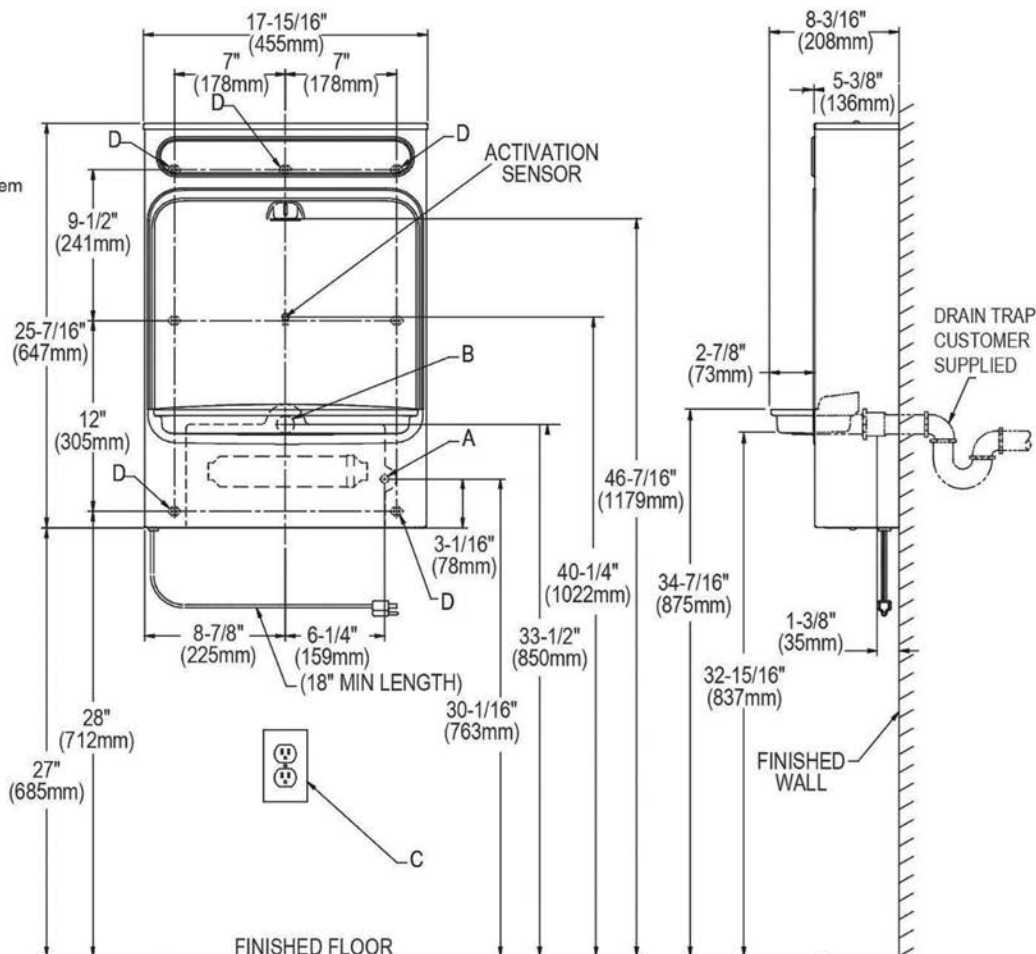
OPERATION OF QUICK CONNECT FITTINGS



Pushing tube in before pulling it out helps to release tube



WaterSentry® Plus Filter System



IMPORTANT!

INSTALLATION NOTES :

Ensure wall is structurally sound to bear the loads imparted by the surface mount bottle filler.

ELECTRICAL

Equipped with electrical cord and three-prong molded rubber plug for use with 15-amp minimum receptacle. Rated at 115V/60Hz, single phase.

These products are designed to operate on 20 psi to 105 psi supply line pressure.

LEGEND :

A = Recommended water supply location; 1/2" I.P.S. maximum pipe size. Service stop valve not furnished.

B = Recommended location for waste outlet 1-1/4" O.D. maximum pipe size.

C = Electrical outlet, three (3) conductor grounded. Locate within safe reach of power cord.

D = 7/16" X 3/4" or round mounting holes for fastening backplate to wall.

NOTE : New Installations Must Use Ground Fault Circuit Interrupter (GFCI). It is highly recommended that the circuit be dedicated and the load protection be sized for 20 amps.

INSTALLATION REQUIREMENTS

The Elkey-EZH2O® requires adequate wall space for installation. Please ensure that the following is available where the system is to be installed. All of the below can be confirmed in your site survey:

- ✓ A potable mains water supply within 5 metres of unit installation location.
- ✓ A suitable waste pipe for the removal of excess water.
- ✓ A 240-volt electric socket within 1 metre of unit location.

FULL SPECIFICATION Elkey EZH2O® Surface Mounted Hands-free Filtered Bottle Filling Station

Power	220V/50-60Hz
Throughput litres per hour	Non refrigerated
Dimensions	455mm (W) x 208mm (D) x 647mm (H)

AVAILABLE ACCESSORIES



Recyclable Paper Cups

- 7oz recyclable paper cups
- 4oz paper cones



Thirsty Work Water Bottles

Thirsty Work 500ml reusable stainless steel water bottles. 67mm x 270mm high.



Bespoke Printed Water Bottles

Add your own company logo to our 500ml reusable stainless steel water bottles. Available in a range of colours.



UV Water Steriliser

Utilising the most advanced UV technology, the unit has been designed to eliminate 99.99% of all waterborne microorganisms, including mould, bacteria and virus'



Elkey Filtration

Providing lead and microplastic removal and the reduction of Class 1 particulate, cysts, and chlorine taste and odour, for the most refreshing water bottle refill.



Request your no obligation 10 day trial

Call **01392 877 172** Email **hello@thirstywork.com**

www.thirstywork.com/free-trial