



Elkay-EZH2O[®]

Surface Mounted Manual Bottle Filling Station (Battery-Powered)

Mains Fed • Wall Mounted • Ambient



Optional
bespoke
branding

Battery
operated
manual
operation

trial it, love it, keep it!

Request your no obligation 10 day trial

Call **01392 877 172** Email **hello@thirstywork.com**

www.thirstywork.com/free-trial

EMASMB

Elkay-EZH2O®

Ambient mains fed, wall mounted, bottle filler
EMASMB



COLOUR OPTIONS



Stainless Steel

WATER OPTIONS



Ambient



Chilled
option

INSTALLATION OPTIONS



Wall mounted



hydrateconsciously!
We're committed to reducing plastic waste

KEY FEATURES

- Manual activated bottle filler
- Ambient water (non-refrigerated)
- Optional remote chiller for refrigeration
- Surface wall-mounted for indoor or outdoor use
- Suitable for busy public environments
- Full servicing package included
- Built-in drainage eliminates standing water
- With Elkay filtration

The Elkay EZH2O® Surface Mounted Manual Bottle Filling Station (Battery-Powered) is the ideal drinking solution for visitors to high footfall indoor public areas, such as schools, health clubs, airports and hospitals. With a depth of 20cm, this ambient water bottle filling station will comfortably fit into almost any location.

As a non-refrigerated unit, it consumes very little electricity - ideal for installations where electrical wiring is not easily accessible or locations looking to reduce electrical usage. (it is possible to easily connect the unit to an optional remote chiller).

The integrated Green Ticker informs users just how many 20oz plastic water bottles have been saved from waste through the use of the refill station.

DIMENSIONS

Height:	657mm
Width:	454mm
Depth:	159mm

INSTALLATION INFORMATION Elkey EZH2O® Surface Mounted Manual Bottle Filling Station

IMPORTANT! INSTALLER PLEASE NOTE:

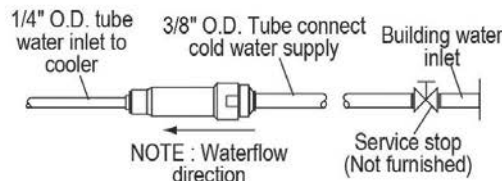
Ensure wall is structurally sound to bear the loads imparted by the surface mount bottle filler.

IMPORTANT!

INSTALLATION NOTES:

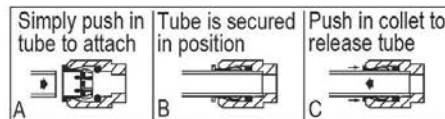
Ensure wall is structurally sound to bear the loads imparted by the Surface Mount Bottle Filler.

These products are designed to operate on 20 psi to 105 psi supply line pressure.

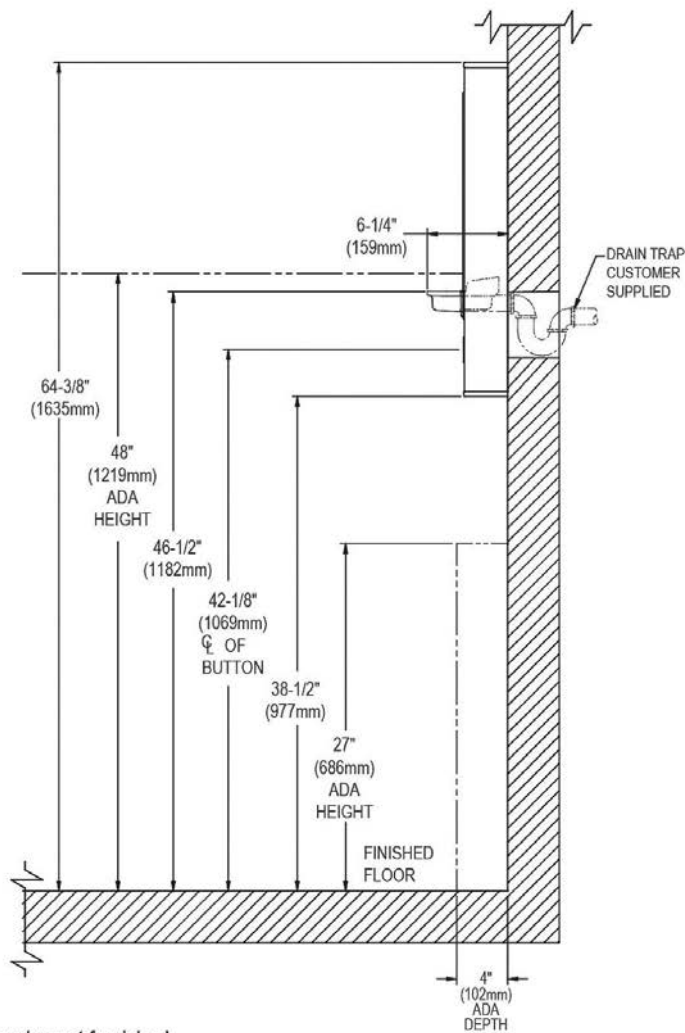
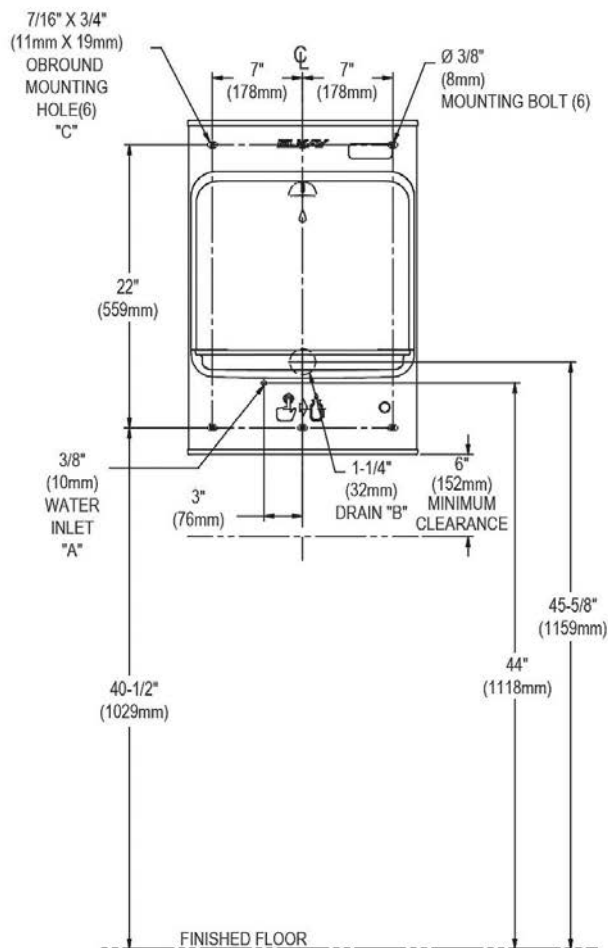


ADA Stand Alone Mounting

OPERATION OF QUICK CONNECT FITTINGS



Pushing tube in before pulling it out helps to release tube



LEGEND:

A = Recommended water supply location; 1/2" IPS maximum pipe size. Service stop valve not furnished.

B = Recommended waste location. Waste shown in wall but may be behind wall outlet 1-1/4" O.D. (Trap not furnished).

C = 7/16" X 3/4" Obround mounting holes for fastening backplate to wall.

NOTE : New Installations Must Use Ground Fault Circuit Interrupter (GFCI). It is highly recommended that the circuit be dedicated and the load protection be sized for 20 amps.

INSTALLATION REQUIREMENTS

The Elkey-EZH2O requires adequate wall space for installation. Please ensure that the following is available where the system is to be installed. All of the below can be confirmed in your site survey:

- ✓ A potable mains water supply within 5 metres of unit installation location.
- ✓ A suitable waste pipe for the removal of excess water.

FULL SPECIFICATION Elkey EZH2O® Surface Mounted Manual Bottle Filling Station

Power	230V/50Hz
Throughput litres per hour	Non-refrigerated
Dimensions	454mm (W) x 159mm (D) x 657mm (H)

AVAILABLE ACCESSORIES



Recyclable Paper Cups

- 7oz recyclable paper cups
- 4oz paper cones



Thirsty Work Water Bottles

Thirsty Work 500ml reusable stainless steel water bottles. 67mm x 270mm high.



Bespoke Printed Water Bottles

Add your own company logo to our 500ml reusable stainless steel water bottles. Available in a range of colours.



UV Water Steriliser

Utilising the most advanced UV technology, the unit has been designed to eliminate 99.99% of all waterborne microorganisms, including mould, bacteria and virus'



Elkey Filtration

Providing lead and microplastic removal and the reduction of Class 1 particulate, cysts, and chlorine taste and odour, for the most refreshing water bottle refill.



Request your no obligation 10 day trial

Call **01392 877 172** Email **hello@thirstywork.com**

www.thirstywork.com/free-trial