



Elkay-EZH2O®

Wall Mounted ADA-compliant Filtered Refrigerated Bottle Filling Station

Mains Fed • Wall Mounted • Chilled • Filtered



**ADA
Compliant**

trial it, love it, keep it!

Request your no obligation 10 day trial

Call **01392 877 172** Email **hello@thirstywork.com**

www.thirstywork.com/free-trial

LMABF8WSS2KN

Elkay-EZH2O®

ADA-compliant filtered bottle filling station
LMABF8WSS2KN



COLOUR OPTIONS



Stainless Steel

WATER OPTIONS



Chilled



Filtered

INSTALLATION OPTIONS



Wall mounted



hydrateconsciously!
We're committed to reducing plastic waste

KEY FEATURES

- Sensor activated bottle filler and manual drinking fountain combination
- Barrier-free, ADA compliant
- Manual front and side bubbler pushbar
- Cooled temperature 3-10°C
- Surface wall-mounted for indoor use
- Suitable for busy public environments
- Safe and reliable
- 30 litres per hour output
- Laminar flow provides minimal splash
- Full filter change and servicing package included
- Built-in drainage eliminates standing water
- With Elkay filtration

The Elkay EZH2O® Wall Mounted ADA-compliant Filtered Refrigerated Bottle Filling Station and Water Fountain provides touchless access to bottle refill facilities. The drinking fountain can be manually activated using the front and side push bar, making all elements of this unit accessible for all.

This model has been built for low energy consumption and designed with a series of green features. The integrated Green Ticker informs users just how many 20oz plastic water bottles have been saved from waste through the use of the refill station.

DIMENSIONS

Height:	1010mm
Width:	459mm
Depth:	473mm

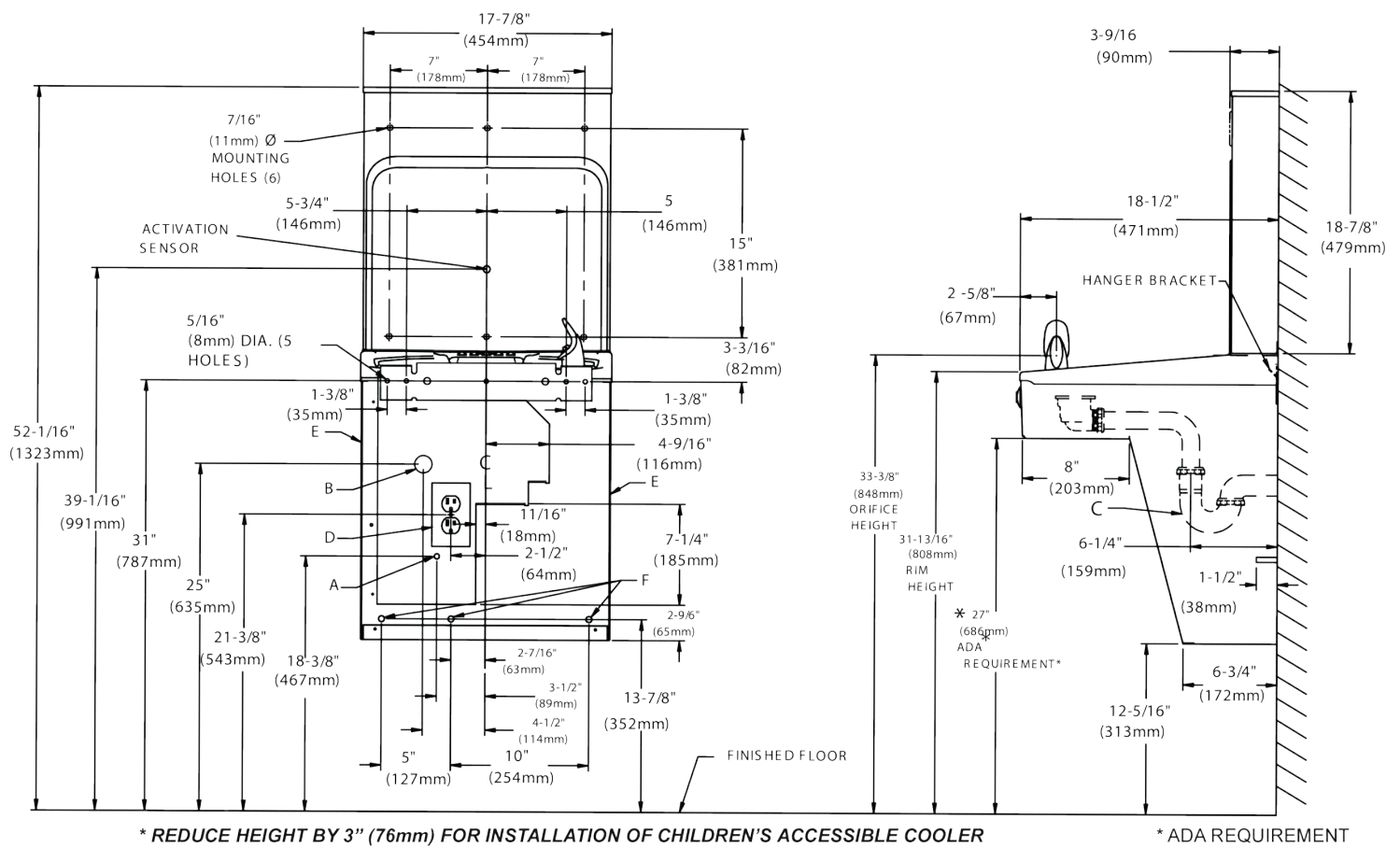
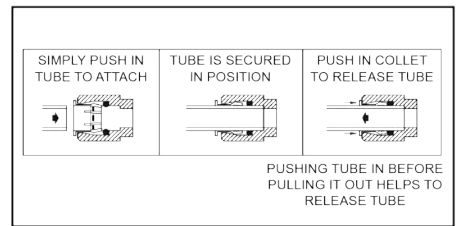
**IMPORTANT!
INSTALLER PLEASE NOTE :**

This water cooler has been designed and built to provide water to the user which has not been altered by materials in the cooler waterways. The grounding of electrical equipment such as telephone, computer, etc. to water lines is a common procedure. The grounding may be in the building but may also occur away from the building. This grounding can cause electrical feedback into a water cooler creating an electrolysis which creates a metallic taste or causes an increase in the metal content of the water. This condition is avoidable by installing the cooler using the proper materials as shown below.

NOTICE

This water cooler must be connected to the water supply using a dielectric coupling. The cooler is furnished with a non-metallic strainer which meets this requirement. The drain trap which is provided by the installer should also be plastic to completely isolate the cooler from the building plumbing system.
Bottle filler unit on bracket attached to wall by 6 holes (as shown). Water and electrical will connect through pre-punched hole in basin.

OPERATION OF QUICK CONECT FITTINGS



Legend

A = recommended water supply location 3/8" (10mm) O.D. Unplated copper tube connect stub with shut off (by others) 3" (76mm) maximum out from wall.

B = recommended location for waste outlet. Drain stub 2 in. Out from wall.

C = 1-1/4" trap not furnished.

D = unit equipped with IEC c14 socket. Cord not provided. Electrical outlet per local code.

E= Ensure proper ventilation by maintaining 6" (152 mm) (min.) Clearance from cabinet louvers to wall.

F = 7/16" (11mm) bolt holes for fastening unit to wall.

FULL SPECIFICATION Elkey EZH2O® Wall Mounted ADA-compliant Filtered Refrigerated Bottle Filling Station

Rated input	220-240v 50hz
Throughput litres per hour	30L/h
Dimensions	459mm (W) x 473mm (D) x 1010mm (H)
Refrigeration	R-290

INSTALLATION REQUIREMENTS

The Elkey-EZH2O® requires adequate wall space for installation. Please ensure that the following is available where the system is to be installed. All of the below can be confirmed in your site survey:

- ✓ A potable mains water supply within 5 metres of unit installation location.
- ✓ A suitable waste pipe for the removal of excess water.
- ✓ Two 240-volt electric sockets within 1 metre of unit location.
- ✓ A wall mounting structure capable of supporting 37Kg.

AVAILABLE ACCESSORIES



Recyclable Paper Cups

- 7oz recyclable paper cups
- 4oz paper cones



Thirsty Work Water Bottles

Thirsty Work 500ml reusable stainless steel water bottles. 67mm x 270mm high.



Bespoke Printed Water Bottles

Add your own company logo to our 500ml reusable stainless steel water bottles. Available in a range of colours.



Request your no obligation 10 day trial

Call **01392 877 172** Email **hello@thirstywork.com**

www.thirstywork.com/free-trial