



Elkay-Surface Bottle Filler

Mains Fed • Wall Mounted • Ambient



Optional
bespoke
branding

Manual
or sensor
operated

Ideal for
indoor and
outdoor
use

trial it, love it, keep it!

Request your no obligation 10 day trial

Call **01392 877 172** Email **hello@thirstywork.com**

www.thirstywork.com/free-trial

Elkay-Surface

Ambient mains fed, wall mounted, bottle filler
EMASMB / EZWSSMJO



COLOUR OPTIONS



Stainless Steel

WATER OPTIONS



Ambient



Chilled option



Filtered

INSTALLATION OPTIONS



Wall mounted



hydrateconsciously!
We're committed to reducing plastic waste

KEY FEATURES

- Manual or sensor activated bottle filler
- Ambient water (non-refrigerated)
- Optional remote chiller for refrigeration
- Surface wall-mounted for indoor use
- Suitable for busy public environments
- Laminar flow provides minimal splash
- Silver Ion Antimicrobial protection on key plastic components to inhibit the growth of mould and mildew
- Full filter change and servicing package included
- Built-in drainage eliminates standing water
- With **pura** filtration

The Elkay-Surface is the ideal drinking solution for visitors to high footfall indoor public areas, such as schools, health clubs, airports and hospitals. With a depth of 20cm, this ambient water bottle filling station will comfortably fit into almost any location.

Designed with user-friendliness in mind, the hands-free filling mechanism and laminar flow reduce the chance of spillages, while queues are cut through ease and speed of use. Water dispense flow is automatically ceased after 20 seconds.

As a non-refrigerated unit, it consumes very little electricity - ideal for installations where electrical wiring is not easily accessible or locations looking to reduce electrical usage. (it is possible to easily connect the unit to an optional remote chiller).

The integrated Green Ticker informs users just how many 20oz plastic water bottles have been saved from waste through the use of the refill station.

DIMENSIONS

Height:	647mm
Width:	455mm
Depth:	208mm

INSTALLATION INFORMATION Elkey-Surface wall-mounted, bottle filler

IMPORTANT! INSTALLER PLEASE NOTE:

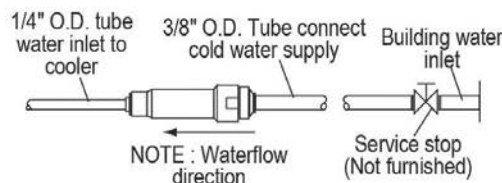
Ensure wall is structurally sound to bear the loads imparted by the surface mount bottle filler.

IMPORTANT!

INSTALLATION NOTES:

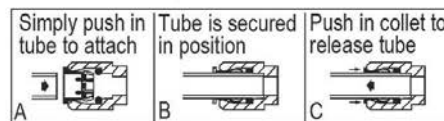
Ensure wall is structurally sound to bear the loads imparted by the Surface Mount Bottle Filler.

These products are designed to operate on 20 psi to 105 psi supply line pressure.

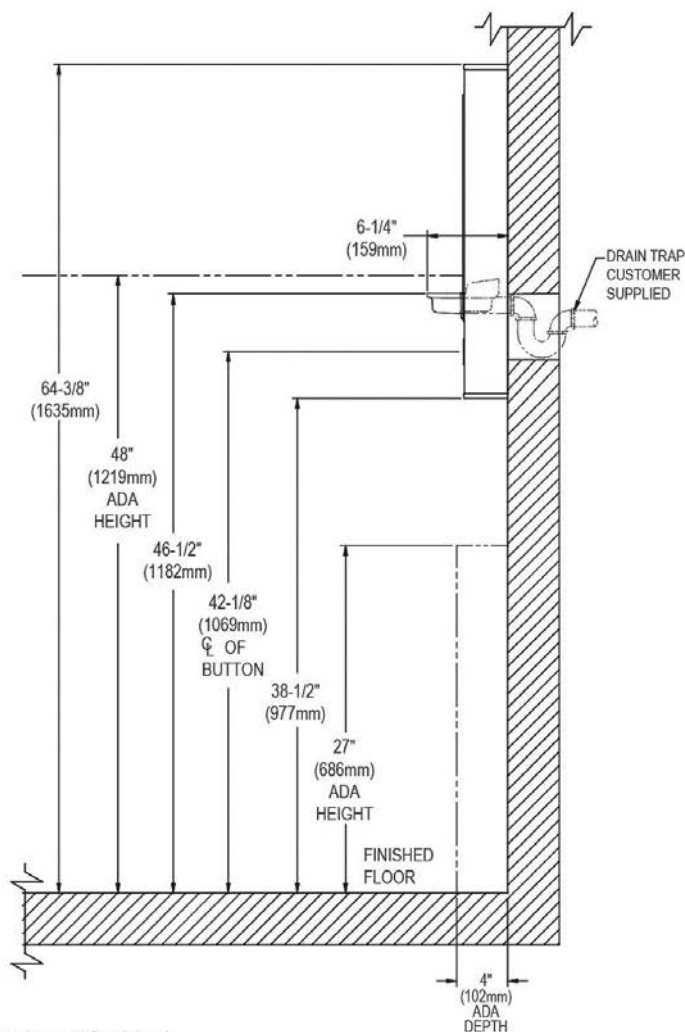
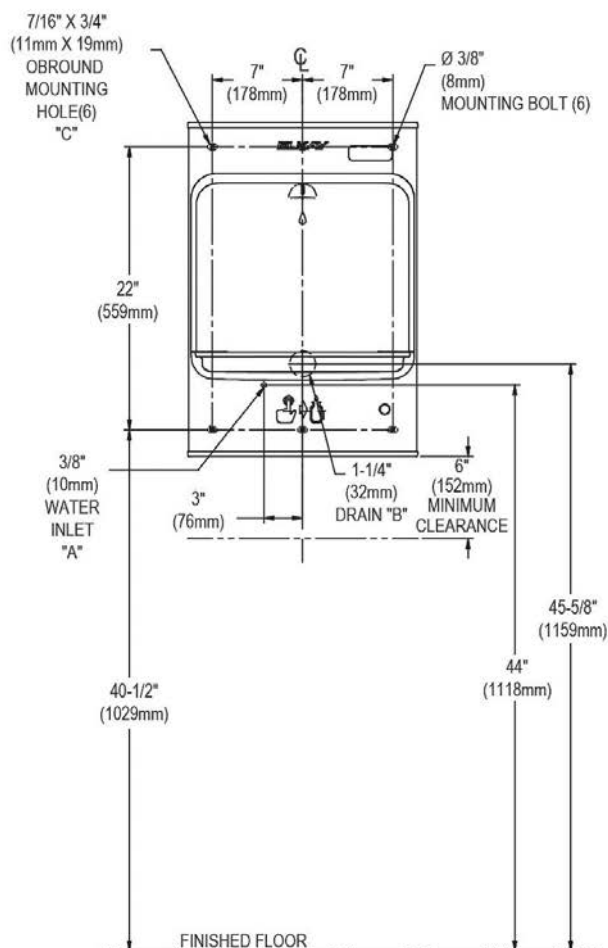


ADA Stand Alone Mounting

OPERATION OF QUICK CONNECT FITTINGS



Pushing tube in before pulling it out helps to release tube



LEGEND:

A = Recommended water supply location; 1/2" IPS maximum pipe size. Service stop valve not furnished.

B = Recommended waste location. Waste shown in wall but may be behind wall outlet 1-1/4" O.D. (Trap not furnished).

C = 7/16" X 3/4" Obround mounting holes for fastening backplate to wall.

NOTE : New Installations Must Use Ground Fault Circuit Interrupter (GFCI). It is highly recommended that the circuit be dedicated and the load protection be sized for 20 amps.

INSTALLATION REQUIREMENTS

The Elkey-Surface requires adequate wall space for installation. Please ensure that the following is available where the system is to be installed. All of the below can be confirmed in your site survey:

- ✓ A potable mains water supply within 5 metres of unit installation location.
- ✓ A suitable waste pipe for the removal of excess water.
- ✓ A 240-volt electric socket within 1 metre of unit location.

FULL SPECIFICATION Elkey-Surface mains fed, wall mounted, ambient bottle filler

Power	230V/50Hz	
Throughput litres per hour	80 L/h	With chiller
Dimensions	208mm (W) x 455mm (D) x 647mm (H)	
	Dispense height: 310mm	

AVAILABLE ACCESSORIES



Recyclable Paper Cups

- 7oz recyclable paper cups
- 4oz paper cones



Thirsty Work Water Bottles

Thirsty Work 500ml reusable stainless steel water bottles. 67mm x 270mm high.



Bespoke Printed Water Bottles

Add your own company logo to our 500ml reusable stainless steel water bottles. Available in a range of colours.



UV Water Steriliser

Utilising the most advanced UV technology, the unit has been designed to eliminate 99.99% of all waterborne microorganisms, including mould, bacteria and virus'



Request your no obligation 10 day trial

Call **01392 877 172** Email **hello@thirstywork.com**

www.thirstywork.com/free-trial