



Elkay-EZH2O®

Wall Mounted Hands-free Filtered Refrigerated Bottle Filling Station

Mains Fed • Wall Mounted • Chilled • Filtered



trial it, love it, keep it!

Request your no obligation 10 day trial

Call **01392 877 172** Email **hello@thirstywork.com**

www.thirstywork.com/free-trial

LZO8WSS2KN

Elkay-EZH2O®

Hands-free activation filtered bottle filling station
LZO8WSS2KN



COLOUR OPTIONS



Stainless Steel

WATER OPTIONS



Chilled



Filtered

INSTALLATION OPTIONS



Wall mounted



**Real time
counter**
shows water bottles
saved from landfill



hydrateconsciously!
We're committed to reducing plastic waste

KEY FEATURES

- Sensor activated bottle filler and drinking fountain combination
- Cooled temperature 3-10°C
- Surface wall-mounted for indoor use
- Suitable for busy public environments
- Safe and reliable
- 30 litres per hour output
- Laminar flow provides minimal splash
- Full filter change and servicing package included
- Built-in drainage eliminates standing water
- With Elkay filtration

Elkay EZH2O® Wall Mounted Hands-free Filtered Refrigerated Bottle Filling Station and Water Fountain provides touchless access to bottle refill facilities, and unusually, the drinking fountain too, making all elements of this unit incredibly easy to use.

This model has been built for low energy consumption and designed with a series of green features. The unit itself has been constructed using 75% recycled materials and the integrated Green Ticker informs users just how many 20oz plastic water bottles have been saved from waste through the use of the refill station.

DIMENSIONS

Height:	992mm
Width:	467mm
Depth:	482mm

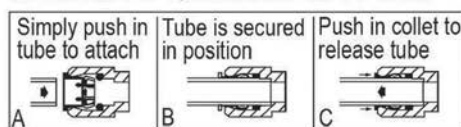
**IMPORTANT!
INSTALLER PLEASE NOTE :**

This water cooler has been designed and built to provide water to the user which has not been altered by materials in the cooler waterways. The grounding of electrical equipment such as telephone, computer, etc. to water lines is a common procedure. The grounding may be in the building but may also occur away from the building. This grounding can cause electrical feedback into a water cooler creating an electrolysis which creates a metallic taste or causes an increase in the metal content of the water. This condition is avoidable by installing the cooler using the proper materials as shown below.

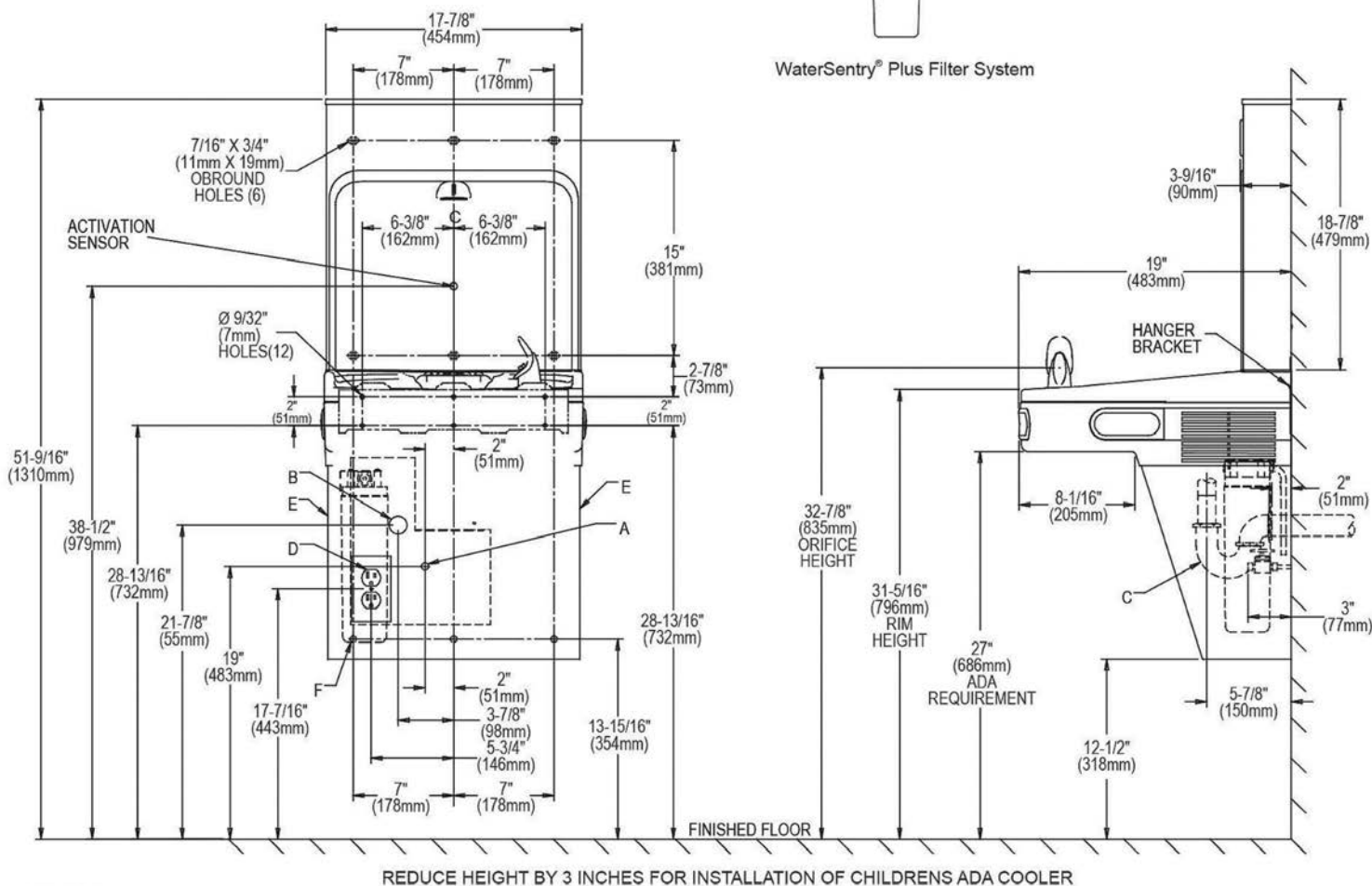
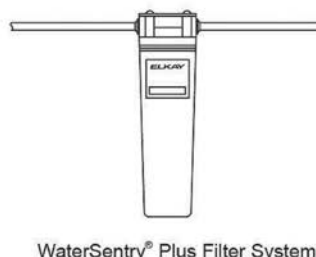
NOTICE

This water cooler must be connected to the water supply using a dielectric coupling. The cooler is furnished with a non-metallic strainer which meets this requirement. The drain trap which is provided by the installer should also be plastic to completely isolate the cooler from the building plumbing system.
Bottle filler unit on bracket attached to wall by 6 holes (as shown). Water and electrical will connect through pre-punched hole in basin.

OPERATION OF QUICK CONNECT FITTINGS



Pushing tube in before pulling it out helps to release tube



REDUCE HEIGHT BY 3 INCHES FOR INSTALLATION OF CHILDRENS ADA COOLER

LEGEND:

A = Recommended Water Supply location. Shut-off Valve (not furnished) to accept 3/8" O.D. unplated copper tube. Up to 3" (76mm) maximum out from wall.

B = Recommended Waste Outlet location. To accommodate 1-1/4" nominal drain.

C = 1-1/4" Trap (not furnished).

D = Electrical Supply (3) Wire Recessed Box Duplex Outlet.

E = Insure proper ventilation by maintaining 6" (152mm) minimum clearance from cabinet

F = 7/16" (11mm) Bolt Holes for fastening to wall.

Note : New Installations Must Use Ground Fault Circuit Interrupter (GFCI).

FULL SPECIFICATION Elkey EZH2O® Wall Mounted Hands-free Filtered Refrigerated Bottle Filling Station

Rated input	220-240V 50/60Hz
Throughput litres per hour	30L/h
Dimensions	467mm (W) x 482mm (D) x 992mm (H)
Refrigeration	R-290

INSTALLATION REQUIREMENTS

The Elkey-EZH2O® requires adequate wall space for installation. Please ensure that the following is available where the system is to be installed. All of the below can be confirmed in your site survey:

- ✓ A potable mains water supply within 5 metres of unit installation location.
- ✓ A suitable waste pipe for the removal of excess water.
- ✓ Two 240-volt electric sockets within 1 metre of unit location.
- ✓ A wall mounting structure capable of supporting 37Kg.

AVAILABLE ACCESSORIES



Recyclable Paper Cups

- 7oz recyclable paper cups
- 4oz paper cones



Thirsty Work Water Bottles

Thirsty Work 500ml reusable stainless steel water bottles. 67mm x 270mm high.



Bespoke Printed Water Bottles

Add your own company logo to our 500ml reusable stainless steel water bottles. Available in a range of colours.



Request your no obligation 10 day trial

Call **01392 877 172** Email **hello@thirstywork.com**

www.thirstywork.com/free-trial