



# AquaPointe-R Bottle Filler

Chilled • Filtered



Touch-free,  
sensor  
activated  
dispense

Call **01392 877 172** Email **hello@thirstywork.com**  
**www.thirstywork.com**

# AquaPointe-R

## Wall Mounted Bottle Filler



Touchless, refrigerated bottle filler  
PN8EBFY



### KEY FEATURES

- Chilled water
- Compact sports bottle filler
- Electronic touch-free activation with shut-off timer
- Enhanced alcove to fit large sports bottles
- Basin is designed to eliminate splashing and standing water.
- Surface wall-mounted
- Heavy duty steel frame
- The bottle counter tracks how many times the unit has been used and promotes refilling of sports bottles
- Energy-efficient LEDs illuminate alcove and aids bottle filling
- Built-in drainage - no drip tray to empty
- Simple to replace existing water fountains
- With **pura** filtration

### COLOUR OPTIONS



Brushed  
Stainless  
Steel

### WATER OPTIONS



Chilled



Filtered

Not all options are included as standard, please choose at point of order

The AquaPointe-R bottle filler is a robust and simple to operate refrigerated bottle filler with electronic, touch-free activation (infrared sensor). The bottle filler has a shut-off timer, and an integrated bottle counter that displays the number of refills.

It is ideal for busy venues, such as public buildings, gyms and sports complexes, hospitals, schools, airports and offices.

### INSTALLATION OPTIONS

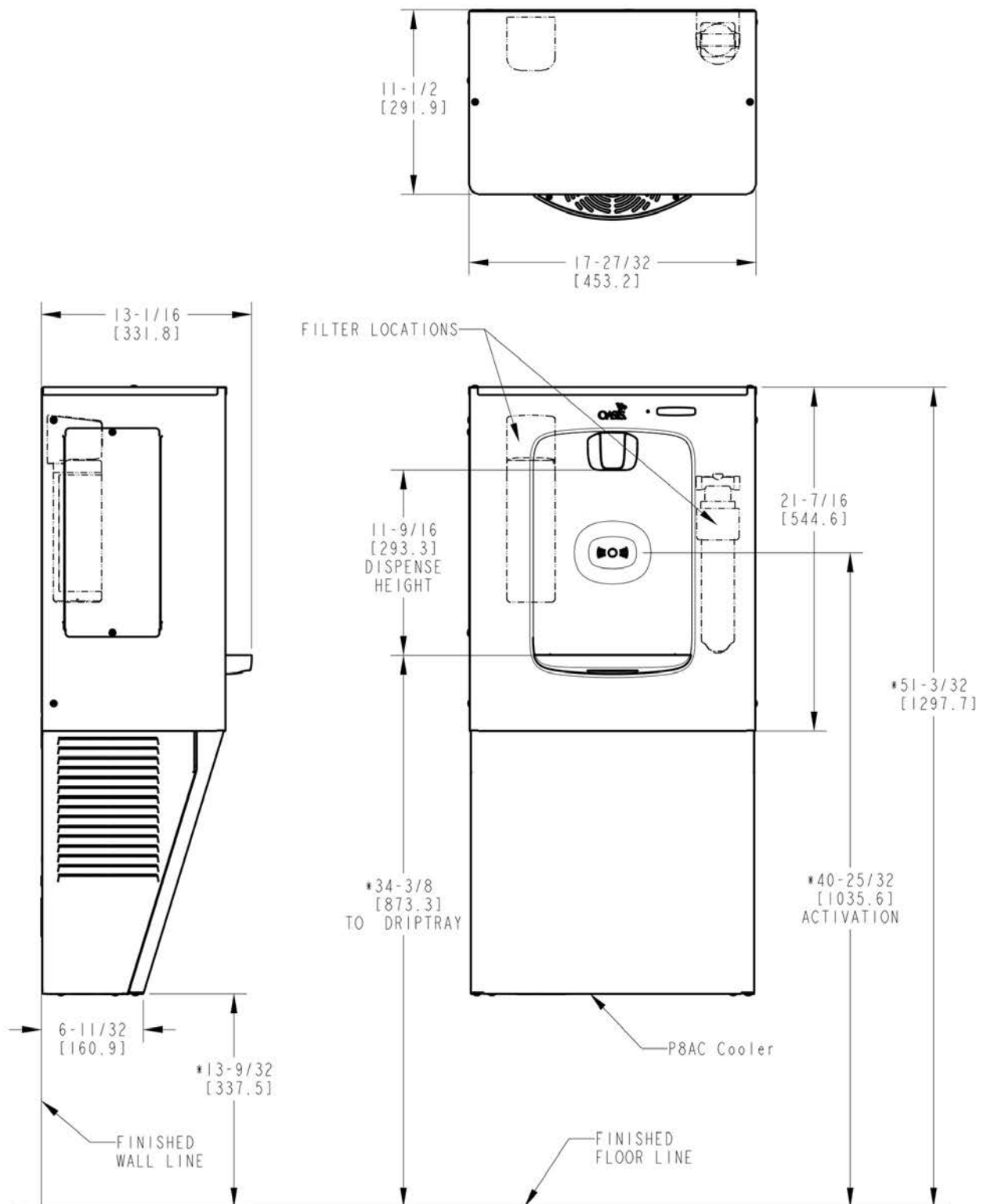


Wall Mounted

### DIMENSIONS

Height (refrigerated):	960mm
Width (refrigerated)::	453mm
Depth (refrigerated)::	331mm
Dispense height:	330mm

## TOUCHLESS REFRIGERATED INSTALLATION



### NOTES:

1. \*DIMENSIONS ARE REFERENCE ONLY.
2. ALL DIMENSIONS ARE IN INCHES. DIMENSIONS IN BRACKETS [ ] ARE IN MILLIMETERS.

## FULL SPECIFICATION AquapointerR refrigerated surface-mounted bottle filler.

Max power consumption	Refrigerated, contactless: 7W	Power supply: 220-240V, 50/60 Hz
Throughput litres per hour	60L/h	
Cooling performance	Chilled below 10°C	32°C Ambient
Dimensions	453mm (W) x 331mm (D) x 960mm (H)	
Weight	25.4 kg	

### INSTALLATION REQUIREMENTS

The AquapointerR requires adequate wall space for installation. Please ensure that the following is available where the system is to be installed. All of the below can be confirmed in your site survey:

- ✓ A potable mains water supply within 5 metres of unit installation location.
- ✓ A suitable waste pipe for the removal of excess water.
- ✓ A 240-volt electric socket within 1 metre of unit location.
- ✓ A wall mounting structure capable of supporting 10Kg.

### AVAILABLE ACCESSORIES



#### Recyclable Paper Cups

- 7oz recyclable paper cups
- 4oz paper cones



#### Thirsty Work Water Bottles

Thirsty Work 500ml reusable stainless steel water bottles. 67mm x 270mm high.



#### Bespoke Printed Water Bottles

Add your own company logo to our 500ml reusable stainless steel water bottles. Available in a range of colours.



Request your no obligation 10 day trial

Call **01392 877 172** Email **hello@thirstywork.com**

**[www.thirstywork.com/free-trial](http://www.thirstywork.com/free-trial)**